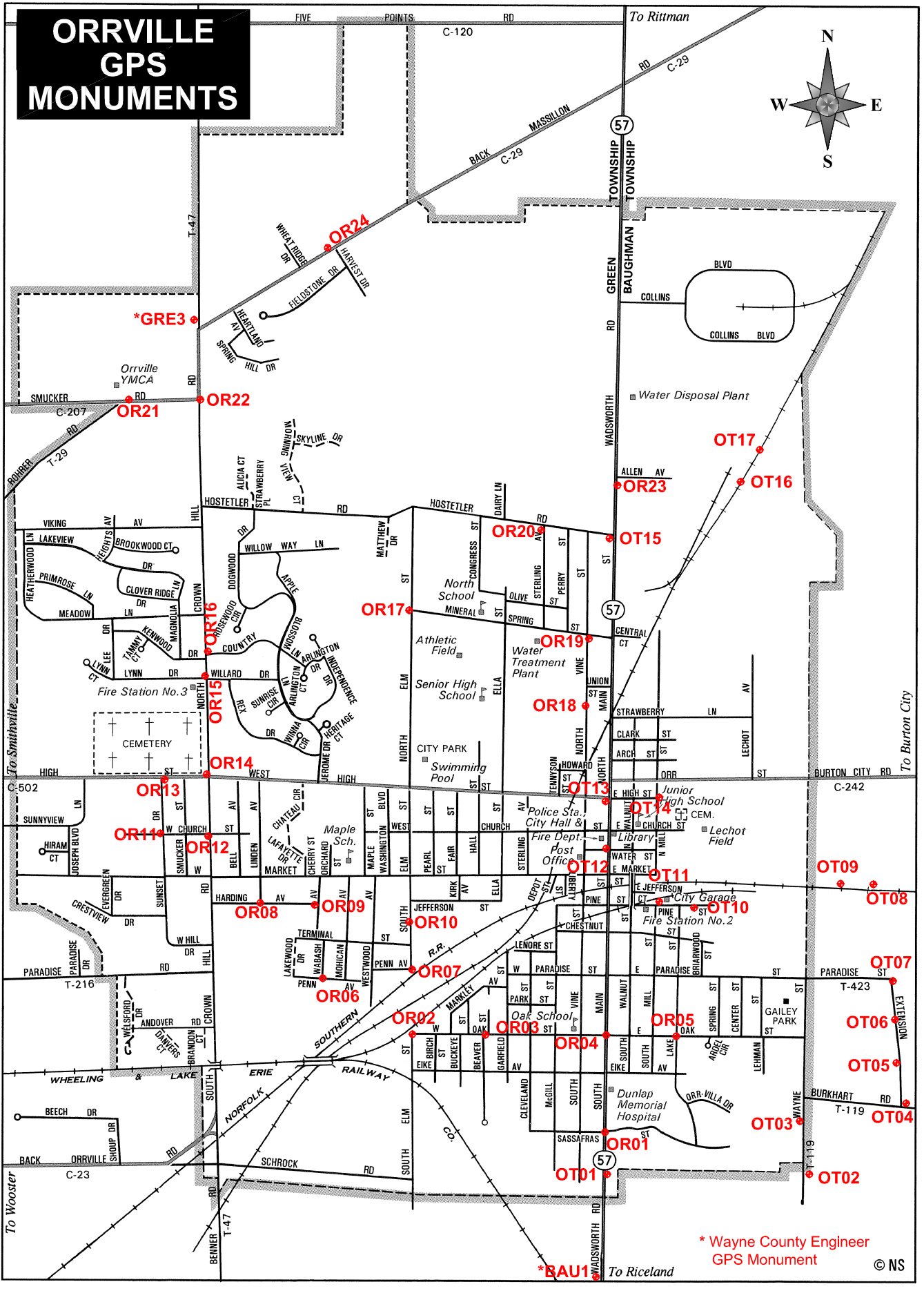
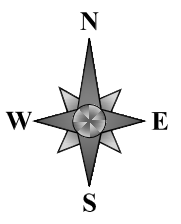


ORRVILLE GPS MONUMENTS

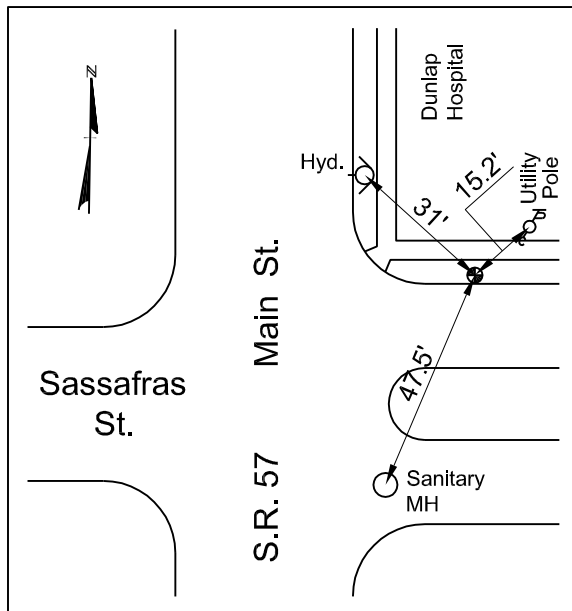


* Wayne County Engineer
GPS Monument

THE CITY OF ORRVILLE

STATION NAME	OR01	TOWNSHIP	BAUGHMAN
TYPE OF MARK	*	SET BY	Engineering Assoc., Inc.
		DATE SET	1 / 4 / 05
HORIZONTAL DATUM	*	HORIZONTAL ORDER	*
LATITUDE (N)	*	LONGITUDE (W)	*
NORTH (y) meters	*	EAST (x) meters	*
NORTH (y) US feet	*	EAST (x) US feet	*
CONVERGENCE	*	COMBINED FACTOR	*
STATE PLANE COORDINATE SYSTEM ZONE		OHIO NORTH (3401)	
VERTICAL DATUM	*	VERTICAL ORDER	*
ELEVATION (z) meters	*	ELEVATION (z) US feet	*
* MONUMENT DESTROYED			

STATION REFERENCES



Looking South

NOTES:

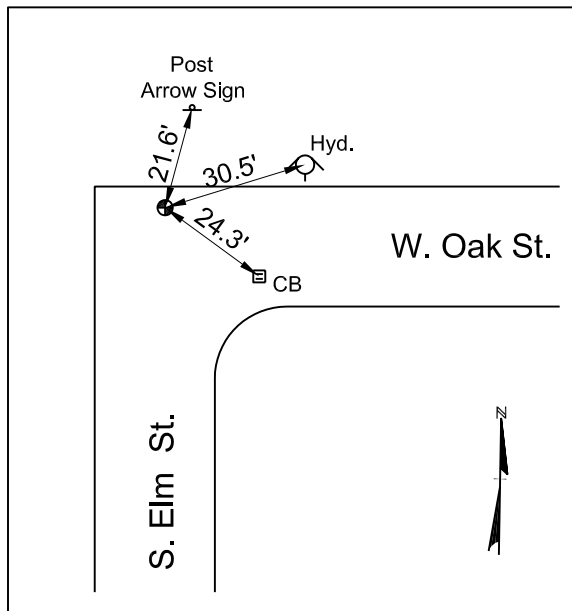
- Horizontal coordinates are based on GPS observations that utilized Wayne County GPS monuments with first (1st) order horizontal control.
- Vertical coordinates are based on GPS observations that utilized Wayne County GPS monuments with second (2nd) order vertical control.

[Return to Map](#)

THE CITY OF ORRVILLE

STATION NAME	<u>OR02</u>	TOWNSHIP	<u>GREEN</u>
TYPE OF MARK	<u>Railroad Spike</u>	SET BY	<u>Engineering Assoc., Inc.</u>
		DATE SET	<u>1 / 4 / 05</u>
HORIZONTAL DATUM	<u>NAD83 (1986)</u>	HORIZONTAL ORDER	<u>See Note 1.</u>
LATITUDE (N)	<u>40° 50' 04.85029"</u>	LONGITUDE (W)	<u>81° 46' 28.09203"</u>
NORTH (y) meters	<u>129,957.561</u>	EAST (x) meters	<u>661,190.940</u>
NORTH (y) US feet	<u>426,369.10</u>	EAST (x) US feet	<u>2,169,257.28</u>
CONVERGENCE	<u>00° 28' 35.88"</u>	COMBINED FACTOR	<u>0.99990084</u>
STATE PLANE COORDINATE SYSTEM ZONE		OHIO NORTH (3401)	
VERTICAL DATUM	<u>NAVD88</u>	VERTICAL ORDER	<u>See Note 2.</u>
ELEVATION (z) meters	<u>327.289</u>	ELEVATION (z) US feet	<u>1073.78</u>

STATION REFERENCES



Looking North

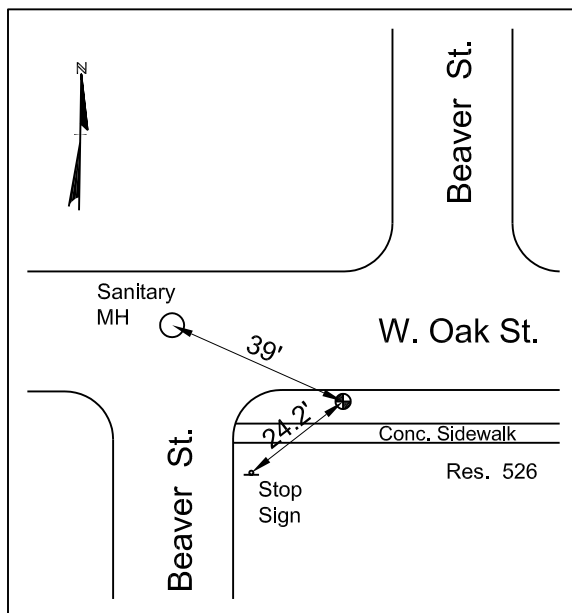
NOTES:

- Horizontal coordinates are based on GPS observations that utilized Wayne County GPS monuments with first (1st) order horizontal control.
- Vertical coordinates are based on GPS observations that utilized Wayne County GPS monuments with second (2nd) order vertical control.

THE CITY OF ORRVILLE

STATION NAME	<u>OR03</u>	TOWNSHIP	<u>GREEN</u>
TYPE OF MARK	<u>5/8" Rebar with Traverse Cap</u>	SET BY	<u>Engineering Assoc., Inc.</u>
		DATE SET	<u>1 / 4 / 05</u>
HORIZONTAL DATUM	<u>NAD83 (1986)</u>	HORIZONTAL ORDER	<u>See Note 1.</u>
LATITUDE (N)	<u>40° 50'04.40547"</u>	LONGITUDE (W)	<u>81° 46' 14.88943"</u>
NORTH (y) meters	<u>129,946.420</u>	EAST (x) meters	<u>661,500.354</u>
NORTH (y) US feet	<u>426,332.55</u>	EAST (x) US feet	<u>2,170,272.41</u>
CONVERGENCE	<u>00° 28' 44.58"</u>	COMBINED FACTOR	<u>0.99990025</u>
STATE PLANE COORDINATE SYSTEM ZONE		OHIO NORTH (3401)	
VERTICAL DATUM	<u>NAVD88</u>	VERTICAL ORDER	<u>See Note 2.</u>
ELEVATION (z) meters	<u>331.071</u>	ELEVATION (z) US feet	<u>1086.19</u>

STATION REFERENCES



Looking West

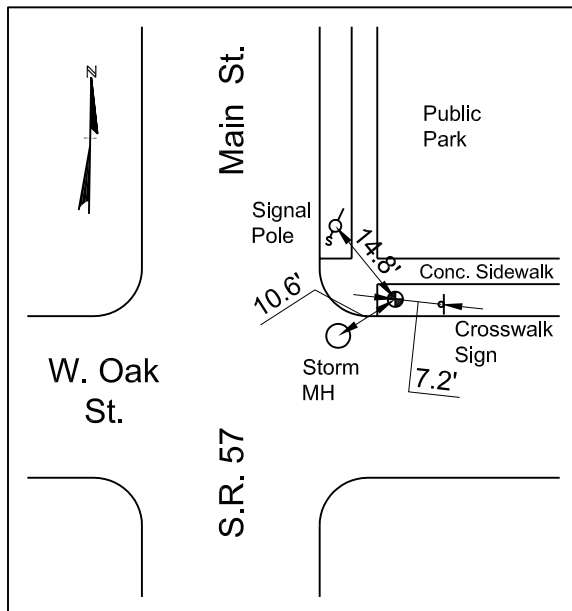
NOTES:

- Horizontal coordinates are based on GPS observations that utilized Wayne County GPS monuments with first (1st) order horizontal control.
- Vertical coordinates are based on GPS observations that utilized Wayne County GPS monuments with second (2nd) order vertical control.

THE CITY OF ORRVILLE

STATION NAME	<u>OR04</u>	TOWNSHIP	<u>BAUGHMAN</u>
TYPE OF MARK	<u>5/8" Rebar with Traverse Cap</u>	SET BY	<u>Engineering Assoc., Inc.</u>
		DATE SET	<u>1 / 4 / 05</u>
HORIZONTAL DATUM	<u>NAD83 (1986)</u>	HORIZONTAL ORDER	<u>See Note 1.</u>
LATITUDE (N)	<u>40° 50' 04.28790"</u>	LONGITUDE (W)	<u>81° 45' 51.81587"</u>
NORTH (y) meters	<u>129,947.333</u>	EAST (x) meters	<u>662.040.933</u>
NORTH (y) US feet	<u>426,335.54</u>	EAST (x) US feet	<u>2,172,045.96</u>
CONVERGENCE	<u>00° 28' 59.70"</u>	COMBINED FACTOR	<u>0.99989965</u>
STATE PLANE COORDINATE SYSTEM ZONE		OHIO NORTH (3401)	
VERTICAL DATUM	<u>NAVD88</u>	VERTICAL ORDER	<u>See Note 2.</u>
ELEVATION (z) meters	<u>334.891</u>	ELEVATION (z) US feet	<u>1098.72</u>

STATION REFERENCES



Looking North

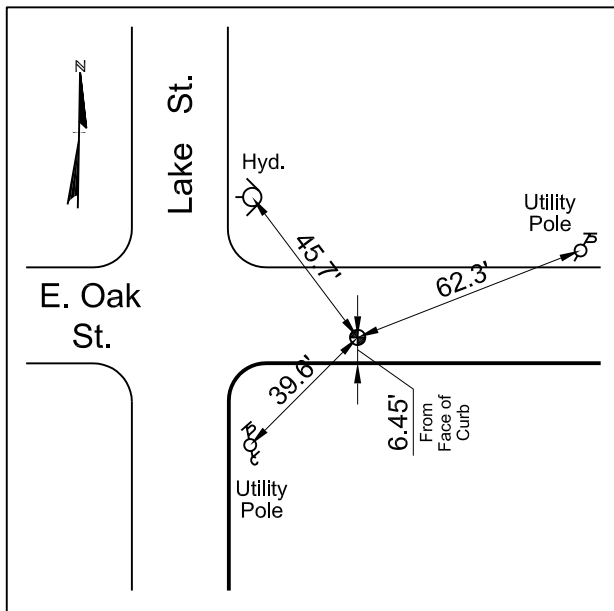
NOTES:

- Horizontal coordinates are based on GPS observations that utilized Wayne County GPS monuments with first (1st) order horizontal control.
- Vertical coordinates are based on GPS observations that utilized Wayne County GPS monuments with second (2nd) order vertical control.

THE CITY OF ORRVILLE

STATION NAME	<u>OR05</u>	TOWNSHIP	<u>BAUGHMAN</u>
TYPE OF MARK	<u>Railroad Spike with Punch</u>	SET BY	<u>Engineering Assoc., Inc.</u>
		DATE SET	<u>1 / 4 / 05</u>
HORIZONTAL DATUM	<u>NAD83 (1986)</u>	HORIZONTAL ORDER	<u>See Note 1.</u>
LATITUDE (N)	<u>40° 50' 03.93505"</u>	LONGITUDE (W)	<u>81° 45' 38.56766"</u>
NORTH (y) meters	<u>129,939.074</u>	EAST (x) meters	<u>662,351.393</u>
NORTH (y) US feet	<u>426,308.45</u>	EAST (x) US feet	<u>2,173,064.53</u>
CONVERGENCE	<u>00° 29' 08.40"</u>	COMBINED FACTOR	<u>0.99989998</u>
STATE PLANE COORDINATE SYSTEM ZONE		OHIO NORTH (3401)	
VERTICAL DATUM	<u>NAVD88</u>	VERTICAL ORDER	<u>See Note 2.</u>
ELEVATION (z) meters	<u>332.769</u>	ELEVATION (z) US feet	<u>1091.76</u>

STATION REFERENCES



Looking West

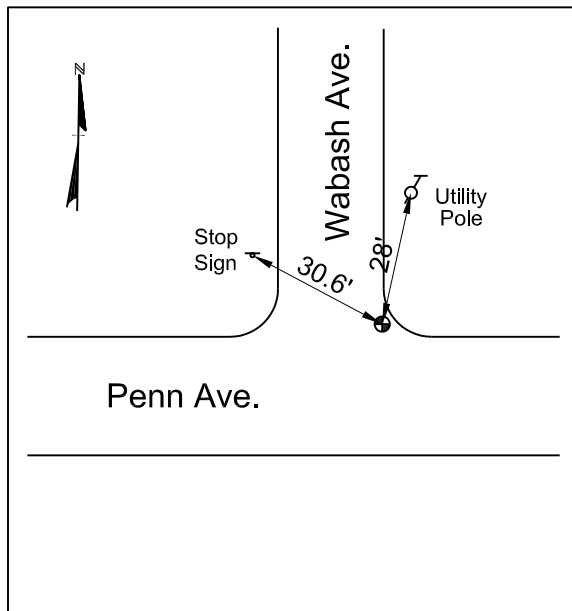
NOTES:

- Horizontal coordinates are based on GPS observations that utilized Wayne County GPS monuments with first (1st) order horizontal control.
- Vertical coordinates are based on GPS observations that utilized Wayne County GPS monuments with second (2nd) order vertical control.

THE CITY OF ORRVILLE

STATION NAME	<u>OR06</u>	TOWNSHIP	<u>GREEN</u>
TYPE OF MARK	<u>Railroad Spike</u>	SET BY	<u>Engineering Assoc., Inc.</u>
		DATE SET	<u>1 / 4 / 05</u>
HORIZONTAL DATUM	<u>NAD83 (1986)</u>	HORIZONTAL ORDER	<u>See Note 1.</u>
LATITUDE (N)	<u>40° 50' 12.82465"</u>	LONGITUDE (W)	<u>81° 46' 44.42045"</u>
NORTH (y) meters	<u>130,200.356</u>	EAST (x) meters	<u>660,806.379</u>
NORTH (y) US feet	<u>427,165.67</u>	EAST (x) US feet	<u>2,167,995.59</u>
CONVERGENCE	<u>00° 28' 25.14"</u>	COMBINED FACTOR	<u>0.99990186</u>
STATE PLANE COORDINATE SYSTEM ZONE		OHIO NORTH (3401)	
VERTICAL DATUM	<u>NAVD88</u>	VERTICAL ORDER	<u>See Note 2.</u>
ELEVATION (z) meters	<u>320.824</u>	ELEVATION (z) US feet	<u>1052.57</u>

STATION REFERENCES



Looking West

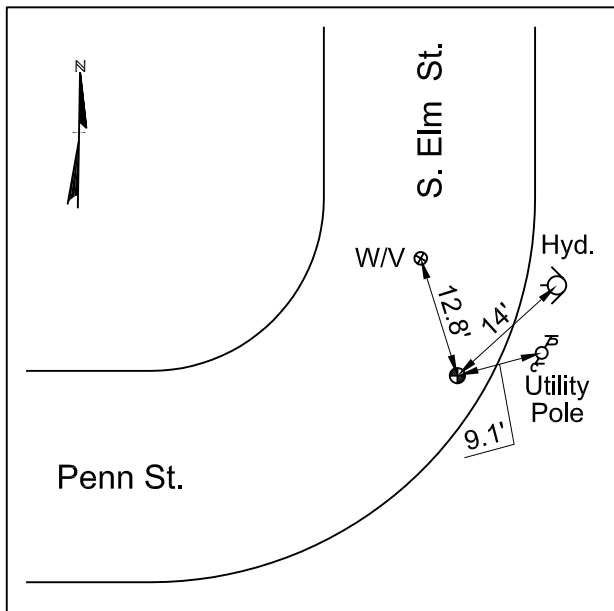
NOTES:

- Horizontal coordinates are based on GPS observations that utilized Wayne County GPS monuments with first (1st) order horizontal control.
- Vertical coordinates are based on GPS observations that utilized Wayne County GPS monuments with second (2nd) order vertical control.

THE CITY OF ORRVILLE

STATION NAME	<u>OR07</u>	TOWNSHIP	<u>GREEN</u>
TYPE OF MARK	<u>Railroad Spike with Punch</u>	SET BY	<u>Engineering Assoc., Inc.</u>
		DATE SET	<u>1 / 4 / 05</u>
HORIZONTAL DATUM	<u>NAD83 (1986)</u>	HORIZONTAL ORDER	<u>See Note 1.</u>
LATITUDE (N)	<u>40° 50' 13.96812"</u>	LONGITUDE (W)	<u>81° 46' 27.94328"</u>
NORTH (y) meters	<u>130,238.827</u>	EAST (x) meters	<u>661,192.085</u>
NORTH (y) US feet	<u>427,291.88</u>	EAST (x) US feet	<u>2,169,261.03</u>
CONVERGENCE	<u>00° 28' 36.00"</u>	COMBINED FACTOR	<u>0.99990163</u>
STATE PLANE COORDINATE SYSTEM ZONE		OHIO NORTH (3401)	
VERTICAL DATUM	<u>NAVD88</u>	VERTICAL ORDER	<u>See Note 2.</u>
ELEVATION (z) meters	<u>322.296</u>	ELEVATION (z) US feet	<u>1057.40</u>

STATION REFERENCES



Looking South

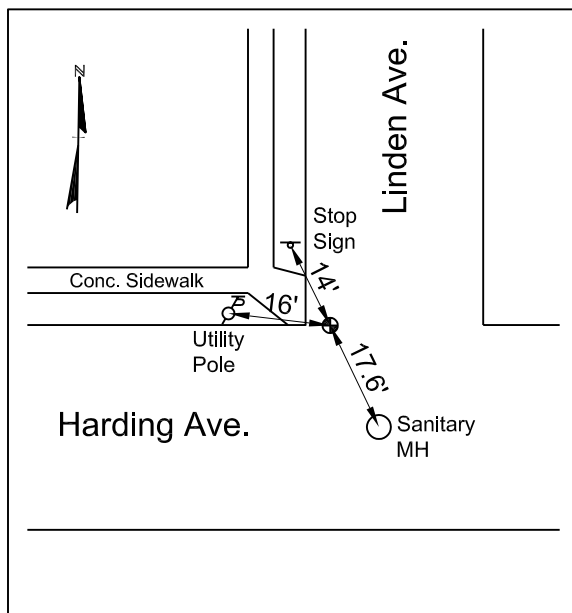
NOTES:

- Horizontal coordinates are based on GPS observations that utilized Wayne County GPS monuments with first (1st) order horizontal control.
- Vertical coordinates are based on GPS observations that utilized Wayne County GPS monuments with second (2nd) order vertical control.

THE CITY OF ORRVILLE

STATION NAME	<u>OR08</u>	TOWNSHIP	<u>GREEN</u>
TYPE OF MARK	<u>Railroad Spike</u>	SET BY	<u>Engineering Assoc., Inc.</u>
		DATE SET	<u>1 / 5 / 05</u>
HORIZONTAL DATUM	<u>NAD83 (1986)</u>	HORIZONTAL ORDER	<u>See Note 1.</u>
LATITUDE (N)	<u>40° 50' 23.37458"</u>	LONGITUDE (W)	<u>81° 46' 55.81588"</u>
NORTH (y) meters	<u>130,523.564</u>	EAST (x) meters	<u>660,536.747</u>
NORTH (y) US feet	<u>428,226.06</u>	EAST (x) US feet	<u>2,167,110.98</u>
CONVERGENCE	<u>00° 28' 17.68"</u>	COMBINED FACTOR	<u>0.99990098</u>
STATE PLANE COORDINATE SYSTEM ZONE		OHIO NORTH (3401)	
VERTICAL DATUM	<u>NAVD88</u>	VERTICAL ORDER	<u>See Note 2.</u>
ELEVATION (z) meters	<u>326.448</u>	ELEVATION (z) US feet	<u>1071.02</u>

STATION REFERENCES



Looking North

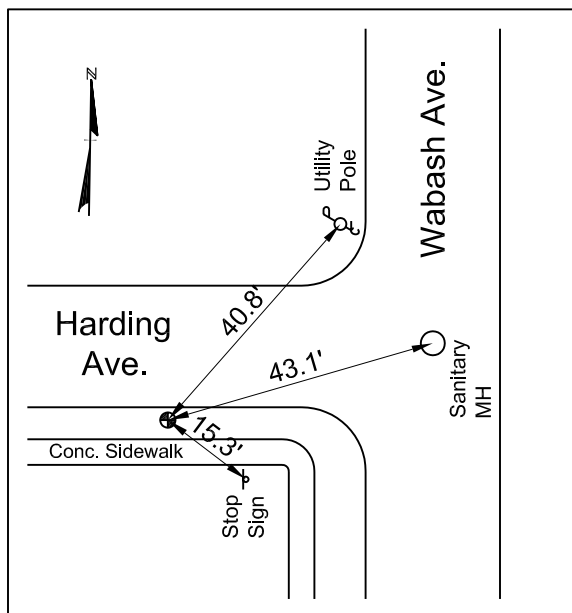
NOTES:

- Horizontal coordinates are based on GPS observations that utilized Wayne County GPS monuments with first (1st) order horizontal control.
- Vertical coordinates are based on GPS observations that utilized Wayne County GPS monuments with second (2nd) order vertical control.

THE CITY OF ORRVILLE

STATION NAME	<u>OR09</u>	TOWNSHIP	<u>GREEN</u>
TYPE OF MARK	<u>5/8" Rebar with Traverse Cap</u>	SET BY	<u>Engineering Assoc., Inc.</u>
		DATE SET	<u>1 / 5 / 05</u>
HORIZONTAL DATUM	<u>NAD83 (1986)</u>	HORIZONTAL ORDER	<u>See Note 1.</u>
LATITUDE (N)	<u>40° 50' 23.08481"</u>	LONGITUDE (W)	<u>81° 46' 45.60056"</u>
NORTH (y) meters	<u>130,516.599</u>	EAST (x) meters	<u>660,776.118</u>
NORTH (y) US feet	<u>428,203.21</u>	EAST (x) US feet	<u>2,167,896.31</u>
CONVERGENCE	<u>00° 28' 24.42"</u>	COMBINED FACTOR	<u>0.99990116</u>
STATE PLANE COORDINATE SYSTEM ZONE		OHIO NORTH (3401)	
VERTICAL DATUM	<u>NAVD88</u>	VERTICAL ORDER	<u>See Note 2.</u>
ELEVATION (z) meters	<u>325.271</u>	ELEVATION (z) US feet	<u>1067.16</u>

STATION REFERENCES



Looking East

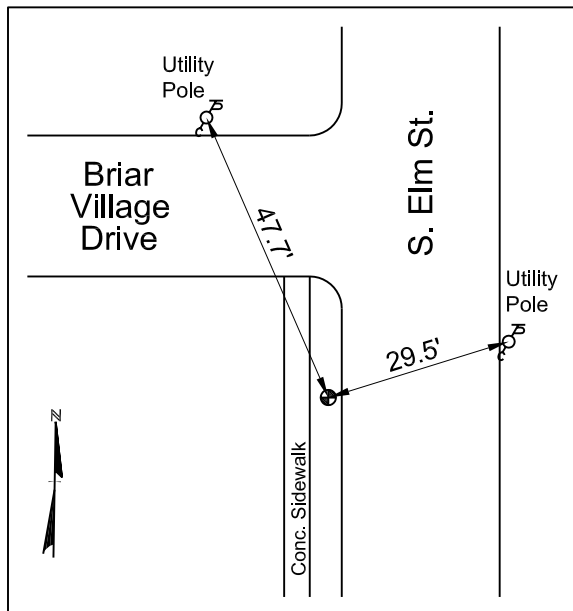
NOTES:

1. Horizontal coordinates are based on GPS observations that utilized Wayne County GPS monuments with first (1st) order horizontal control.
2. Vertical coordinates are based on GPS observations that utilized Wayne County GPS monuments with second (2nd) order vertical control.

THE CITY OF ORRVILLE

STATION NAME	<u>OR10</u>	TOWNSHIP	<u>GREEN</u>
TYPE OF MARK	<u>5/8" Rebar with Traverse Cap</u>	SET BY	<u>Engineering Assoc., Inc.</u>
		DATE SET	<u>1 / 4 / 05</u>
HORIZONTAL DATUM	<u>NAD83 (1986)</u>	HORIZONTAL ORDER	<u>See Note 1.</u>
LATITUDE (N)	<u>40° 50' 20.00190"</u>	LONGITUDE (W)	<u>81° 46' 28.17382"</u>
NORTH (y) meters	<u>130,424.892</u>	EAST (x) meters	<u>661,185.136</u>
NORTH (y) US feet	<u>427,902.33</u>	EAST (x) US feet	<u>2,169,238.24</u>
CONVERGENCE	<u>0° 28' 35.82"</u>	COMBINED FACTOR	<u>0.99990209</u>
STATE PLANE COORDINATE SYSTEM ZONE		OHIO NORTH (3401)	
VERTICAL DATUM	<u>NAVD88</u>	VERTICAL ORDER	<u>See Note 2.</u>
ELEVATION (z) meters	<u>319.346</u>	ELEVATION (z) US feet	<u>1047.72</u>

STATION REFERENCES



Looking Northwest

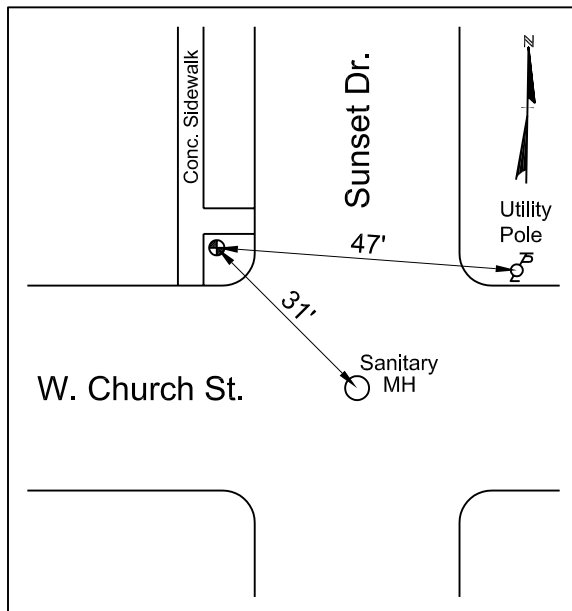
NOTES:

- Horizontal coordinates are based on GPS observations that utilized Wayne County GPS monuments with first (1st) order horizontal control.
- Vertical coordinates are based on GPS observations that utilized Wayne County GPS monuments with second (2nd) order vertical control.

THE CITY OF ORRVILLE

STATION NAME	<u>OR11</u>	TOWNSHIP	<u>GREEN</u>
TYPE OF MARK	<u>5/8" Rebar with Traverse Cap</u>	SET BY	<u>Engineering Assoc., Inc.</u>
		DATE SET	<u>1 / 5 / 05</u>
HORIZONTAL DATUM	<u>NAD83 (1986)</u>	HORIZONTAL ORDER	<u>See Note 1.</u>
LATITUDE (N)	<u>40° 50' 32.79098"</u>	LONGITUDE (W)	<u>81° 47' 13.82920"</u>
NORTH (y) meters	<u>130,810.549</u>	EAST (x) meters	<u>660,112.405</u>
NORTH (y) US feet	<u>429,167.61</u>	EAST (x) US feet	<u>2,165,718.78</u>
CONVERGENCE	<u>0° 28' 5.82"</u>	COMBINED FACTOR	<u>0.99989872</u>
STATE PLANE COORDINATE SYSTEM ZONE		OHIO NORTH (3401)	
VERTICAL DATUM	<u>NAVD88</u>	VERTICAL ORDER	<u>See Note 2.</u>
ELEVATION (z) meters	<u>340.831</u>	ELEVATION (z) US feet	<u>1118.21</u>

STATION REFERENCES



Looking West

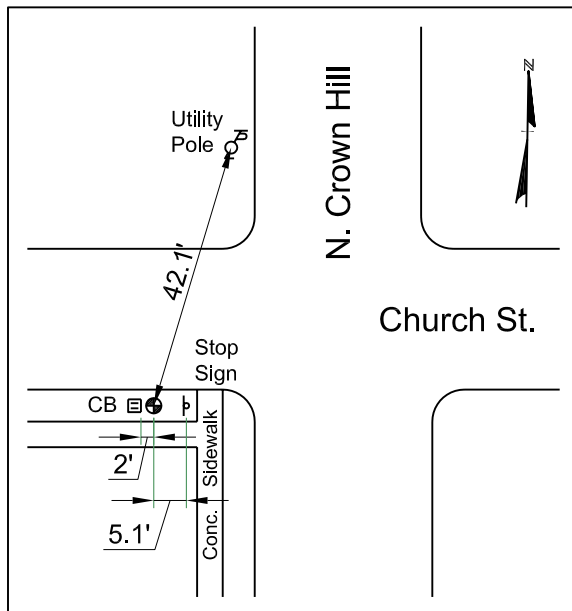
NOTES:

- Horizontal coordinates are based on GPS observations that utilized Wayne County GPS monuments with first (1st) order horizontal control.
- Vertical coordinates are based on GPS observations that utilized Wayne County GPS monuments with second (2nd) order vertical control.

THE CITY OF ORRVILLE

STATION NAME	<u>OR12</u>	TOWNSHIP	<u>GREEN</u>
TYPE OF MARK	<u>5/8" Rebar with Traverse Cap</u>	SET BY	<u>Engineering Assoc., Inc.</u>
		DATE SET	<u>1 / 5 / 05</u>
HORIZONTAL DATUM	<u>NAD83 (1986)</u>	HORIZONTAL ORDER	<u>See Note 1.</u>
LATITUDE (N)	<u>40° 50' 32.39533"</u>	LONGITUDE (W)	<u>81° 47' 04.76509"</u>
NORTH (y) meters	<u>130,800.084</u>	EAST (x) meters	<u>660,324.826</u>
NORTH (y) US feet	<u>429,133.28</u>	EAST (x) US feet	<u>2,166,415.70</u>
CONVERGENCE	<u>0° 28' 11.82"</u>	COMBINED FACTOR	<u>0.99990011</u>
STATE PLANE COORDINATE SYSTEM ZONE		OHIO NORTH (3401)	
VERTICAL DATUM	<u>NAVD88</u>	VERTICAL ORDER	<u>See Note 2.</u>
ELEVATION (z) meters	<u>331.946</u>	ELEVATION (z) US feet	<u>1089.06</u>

STATION REFERENCES



Looking South

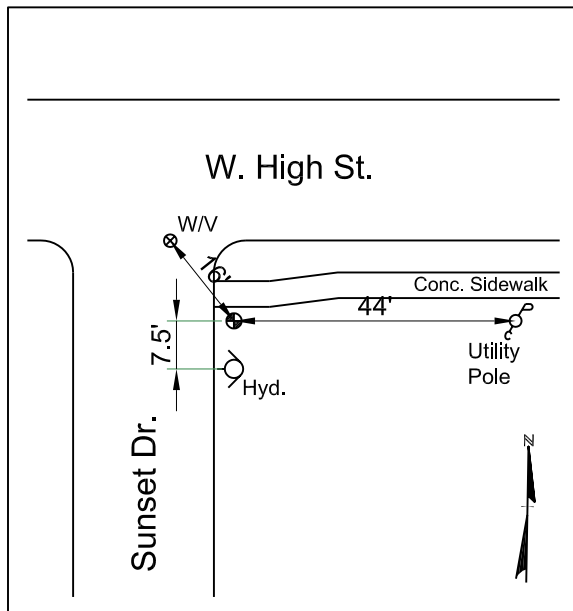
NOTES:

- Horizontal coordinates are based on GPS observations that utilized Wayne County GPS monuments with first (1st) order horizontal control.
- Vertical coordinates are based on GPS observations that utilized Wayne County GPS monuments with second (2nd) order vertical control.

THE CITY OF ORRVILLE

STATION NAME	<u>OR13</u>	TOWNSHIP	<u>GREEN</u>
TYPE OF MARK	<u>5/8" Rebar with Traverse Cap</u>	SET BY	<u>Engineering Assoc., Inc.</u>
		DATE SET	<u>1 / 5 / 05</u>
HORIZONTAL DATUM	<u>NAD83 (1986)</u>	HORIZONTAL ORDER	<u>See Note 1.</u>
LATITUDE (N)	<u>40° 50' 39.53383"</u>	LONGITUDE (W)	<u>81° 47' 13.23144"</u>
NORTH (y) meters	<u>131,018.646</u>	EAST (x) meters	<u>660,124.707</u>
NORTH (y) US feet	<u>429,850.34</u>	EAST (x) US feet	<u>2,165,759.14</u>
CONVERGENCE	<u>0° 28' 06.24"</u>	COMBINED FACTOR	<u>0.99989945</u>
STATE PLANE COORDINATE SYSTEM ZONE		OHIO NORTH (3401)	
VERTICAL DATUM	<u>NAVD88</u>	VERTICAL ORDER	<u>See Note 2.</u>
ELEVATION (z) meters	<u>336.189</u>	ELEVATION (z) US feet	<u>1102.98</u>

STATION REFERENCES



Looking West

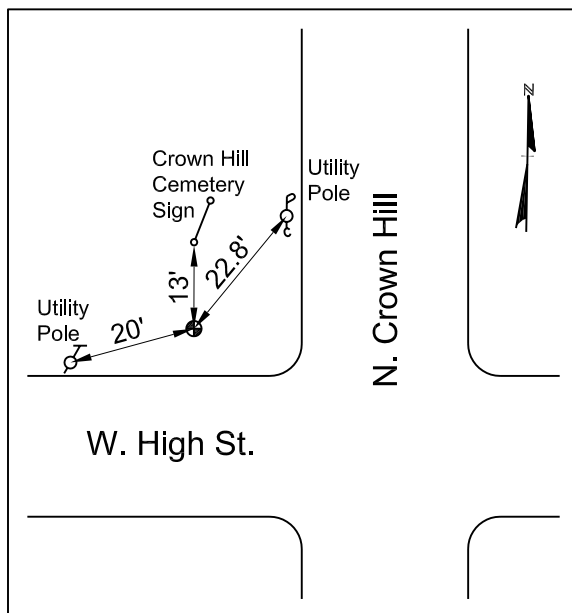
NOTES:

- Horizontal coordinates are based on GPS observations that utilized Wayne County GPS monuments with first (1st) order horizontal control.
- Vertical coordinates are based on GPS observations that utilized Wayne County GPS monuments with second (2nd) order vertical control.

THE CITY OF ORRVILLE

STATION NAME	<u>OR14</u>	TOWNSHIP	<u>GREEN</u>
TYPE OF MARK	<u>5/8" Rebar with Traverse Cap</u>	SET BY	<u>Engineering Assoc., Inc.</u>
		DATE SET	<u>1 / 5 / 05</u>
HORIZONTAL DATUM	<u>NAD83 (1986)</u>	HORIZONTAL ORDER	<u>See Note 1.</u>
LATITUDE (N)	<u>40° 50' 40.10810"</u>	LONGITUDE (W)	<u>81° 47' 05.04807"</u>
NORTH (y) meters	<u>131,037.929</u>	EAST (x) meters	<u>660,316.246</u>
NORTH (y) US feet	<u>429,913.60</u>	EAST (x) US feet	<u>2,166,387.55</u>
CONVERGENCE	<u>0° 28' 11.64"</u>	COMBINED FACTOR	<u>0.99989926</u>
STATE PLANE COORDINATE SYSTEM ZONE		OHIO NORTH (3401)	
VERTICAL DATUM	<u>NAVD88</u>	VERTICAL ORDER	<u>See Note 2.</u>
ELEVATION (z) meters	<u>337.417</u>	ELEVATION (z) US feet	<u>1107.01</u>

STATION REFERENCES



Looking North

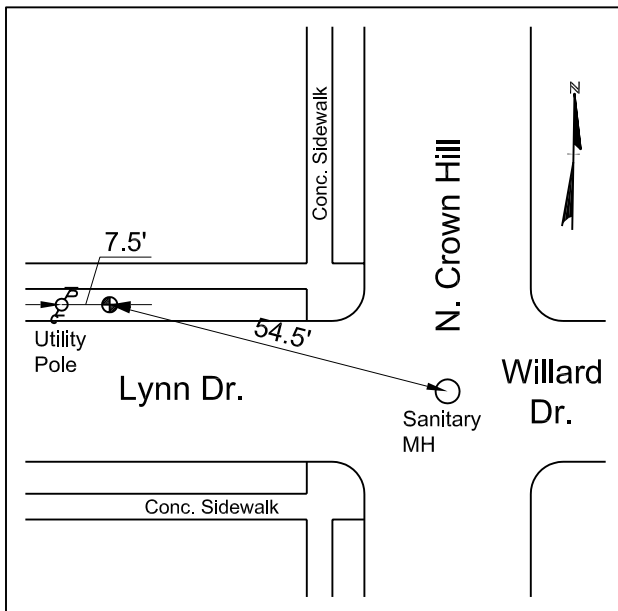
NOTES:

- Horizontal coordinates are based on GPS observations that utilized Wayne County GPS monuments with first (1st) order horizontal control.
- Vertical coordinates are based on GPS observations that utilized Wayne County GPS monuments with second (2nd) order vertical control.

THE CITY OF ORRVILLE

STATION NAME	<u>OR15</u>	TOWNSHIP	<u>GREEN</u>
TYPE OF MARK	<u>5/8" Rebar with Traverse Cap</u>	SET BY	<u>Engineering Assoc., Inc.</u>
		DATE SET	<u>1 / 5 / 05</u>
HORIZONTAL DATUM	<u>NAD83 (1986)</u>	HORIZONTAL ORDER	<u>See Note 1.</u>
LATITUDE (N)	<u>40° 50' 53.98578"</u>	LONGITUDE (W)	<u>81° 47' 04.65802"</u>
NORTH (y) meters	<u>131,466.058</u>	EAST (x) meters	<u>660,321.872</u>
NORTH (y) US feet	<u>431,318.22</u>	EAST (x) US feet	<u>2,166,406.01</u>
CONVERGENCE	<u>0° 28' 11.88"</u>	COMBINED FACTOR	<u>0.99989803</u>
STATE PLANE COORDINATE SYSTEM ZONE		OHIO NORTH (3401)	
VERTICAL DATUM	<u>NAVD88</u>	VERTICAL ORDER	<u>See Note 2.</u>
ELEVATION (z) meters	<u>338.832</u>	ELEVATION (z) US feet	<u>1111.65</u>

STATION REFERENCES



Looking North

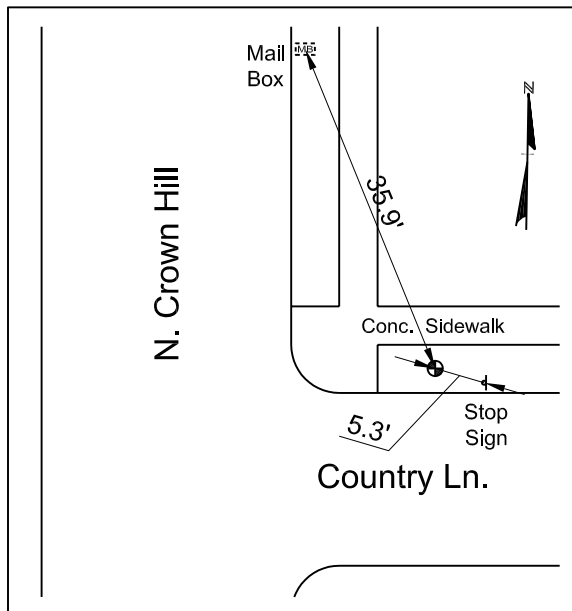
NOTES:

- Horizontal coordinates are based on GPS observations that utilized Wayne County GPS monuments with first (1st) order horizontal control.
- Vertical coordinates are based on GPS observations that utilized Wayne County GPS monuments with second (2nd) order vertical control.

THE CITY OF ORRVILLE

STATION NAME	<u>OR16</u>	TOWNSHIP	<u>GREEN</u>
TYPE OF MARK	<u>5/8" Rebar with Traverse Cap</u>	SET BY	<u>Engineering Assoc., Inc.</u>
		DATE SET	<u>1 / 5 / 05</u>
HORIZONTAL DATUM	<u>NAD83 (1986)</u>	HORIZONTAL ORDER	<u>See Note 1.</u>
LATITUDE (N)	<u>40° 50' 58.09799"</u>	LONGITUDE (W)	<u>81° 47' 03.35110"</u>
NORTH (y) meters	<u>131,593.149</u>	EAST (x) meters	<u>660,351.442</u>
NORTH (y) US feet	<u>431,735.19</u>	EAST (x) US feet	<u>2,166,503.02</u>
CONVERGENCE	<u>0° 28' 12.72"</u>	COMBINED FACTOR	<u>0.99989901</u>
STATE PLANE COORDINATE SYSTEM ZONE		OHIO NORTH (3401)	
VERTICAL DATUM	<u>NAVD88</u>	VERTICAL ORDER	<u>See Note 2.</u>
ELEVATION (z) meters	<u>332.601</u>	ELEVATION (z) US feet	<u>1091.21</u>

STATION REFERENCES



Looking West

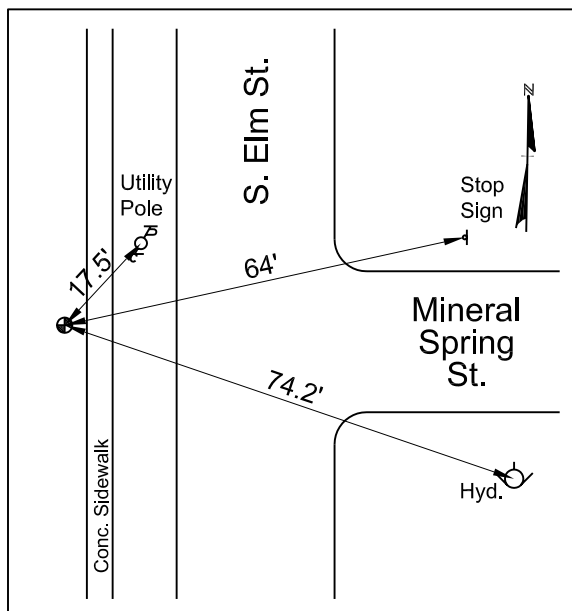
NOTES:

1. Horizontal coordinates are based on GPS observations that utilized Wayne County GPS monuments with first (1st) order horizontal control.
2. Vertical coordinates are based on GPS observations that utilized Wayne County GPS monuments with second (2nd) order vertical control.

THE CITY OF ORRVILLE

STATION NAME	<u>OR17</u>	TOWNSHIP	<u>GREEN</u>
TYPE OF MARK	<u>5/8" Rebar with Traverse Cap</u>	SET BY	<u>Engineering Assoc., Inc.</u>
		DATE SET	<u>1 / 5 / 05</u>
HORIZONTAL DATUM	<u>NAD83 (1986)</u>	HORIZONTAL ORDER	<u>See Note 1.</u>
LATITUDE (N)	<u>40° 51' 03.13938"</u>	LONGITUDE (W)	<u>81° 46' 27.56437"</u>
NORTH (y) meters	<u>131,755.576</u>	EAST (x) meters	<u>661,188.3422</u>
NORTH (y) US feet	<u>432,268.09</u>	EAST (x) US feet	<u>2,169,248.75</u>
CONVERGENCE	<u>0° 28' 36.24"</u>	COMBINED FACTOR	<u>0.99990183</u>
STATE PLANE COORDINATE SYSTEM ZONE		OHIO NORTH (3401)	
VERTICAL DATUM	<u>NAVD88</u>	VERTICAL ORDER	<u>See Note 2.</u>
ELEVATION (z) meters	<u>314.649</u>	ELEVATION (z) US feet	<u>1032.31</u>

STATION REFERENCES



Looking North

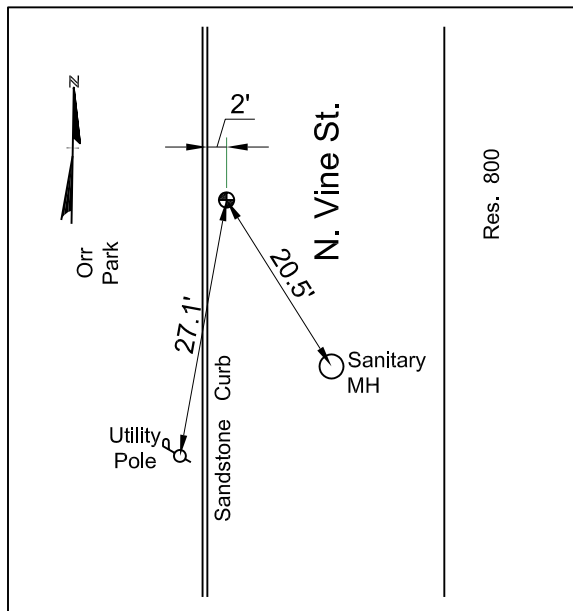
NOTES:

- Horizontal coordinates are based on GPS observations that utilized Wayne County GPS monuments with first (1st) order horizontal control.
- Vertical coordinates are based on GPS observations that utilized Wayne County GPS monuments with second (2nd) order vertical control.

THE CITY OF ORRVILLE

STATION NAME	<u>OR18</u>	TOWNSHIP	<u>GREEN</u>
TYPE OF MARK	<u>Railroad Spike</u>	SET BY	<u>Engineering Assoc., Inc.</u>
		DATE SET	<u>1 / 4 / 05</u>
HORIZONTAL DATUM	<u>NAD83(1986)</u>	HORIZONTAL ORDER	<u>See Note 1.</u>
LATITUDE (N)	<u>40° 50' 47.70049"</u>	LONGITUDE (W)	<u>81° 45' 55.76517"</u>
NORTH (y) meters	<u>131,285.603</u>	EAST (x) meters	<u>661,937.134</u>
NORTH (y) US feet	<u>430,726.18</u>	EAST (x) US feet	<u>2,171,705.42</u>
CONVERGENCE	<u>0° 28' 57.12"</u>	COMBINED FACTOR	<u>0.99990288</u>
STATE PLANE COORDINATE SYSTEM ZONE		OHIO NORTH (3401)	
VERTICAL DATUM	<u>NAVD88</u>	VERTICAL ORDER	<u>See Note 2.</u>
ELEVATION (z) meters	<u>314.289</u>	ELEVATION (z) US feet	<u>1031.13</u>

STATION REFERENCES



Looking West

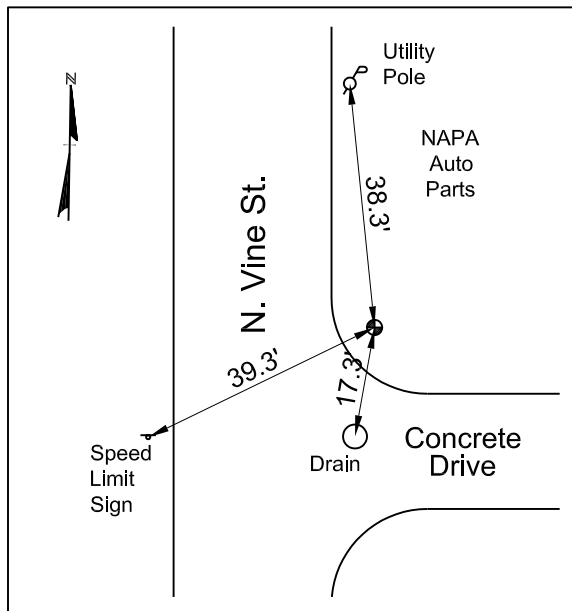
NOTES:

1. Horizontal coordinates are based on GPS observations that utilized Wayne County GPS monuments with first (1st) order horizontal control.
2. Vertical coordinates are based on GPS observations that utilized Wayne County GPS monuments with second (2nd) order vertical control.

THE CITY OF ORRVILLE

STATION NAME	<u>OR19</u>	TOWNSHIP	<u>GREEN</u>
TYPE OF MARK	<u>5/8" Rebar with Traverse Cap</u>	SET BY	<u>Engineering Assoc., Inc.</u>
		DATE SET	<u>1 / 5 / 05</u>
HORIZONTAL DATUM	<u>NAD83 (1986)</u>	HORIZONTAL ORDER	<u>See Note 1.</u>
LATITUDE (N)	<u>40° 50' 57.59218"</u>	LONGITUDE (W)	<u>81° 45' 54.96732"</u>
NORTH (y) meters	<u>131,590.867</u>	EAST (x) meters	<u>661,953.252</u>
NORTH (y) US feet	<u>431,727.70</u>	EAST (x) US feet	<u>2,171,758.29</u>
CONVERGENCE	<u>0° 28' 57.66"</u>	COMBINED FACTOR	<u>0.99990233</u>
STATE PLANE COORDINATE SYSTEM ZONE		OHIO NORTH (3401)	
VERTICAL DATUM	<u>NAVD88</u>	VERTICAL ORDER	<u>See Note 2.</u>
ELEVATION (z) meters	<u>311.424</u>	ELEVATION (z) US feet	<u>1021.73</u>

STATION REFERENCES



Looking East

NOTES:

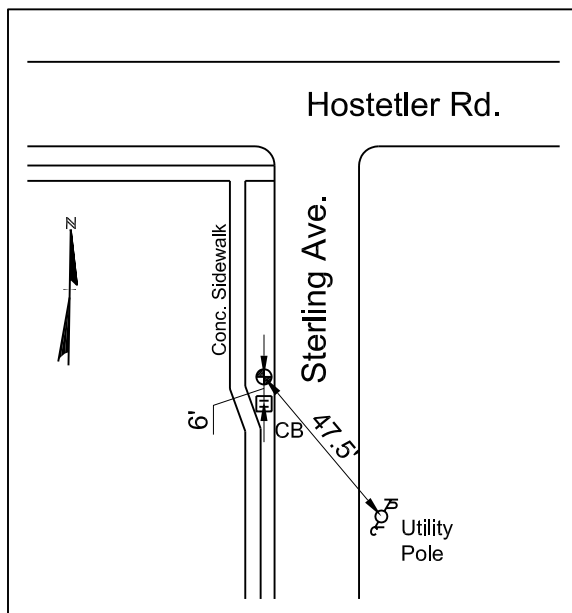
- Horizontal coordinates are based on GPS observations that utilized Wayne County GPS monuments with first (1st) order horizontal control.
- Vertical coordinates are based on GPS observations that utilized Wayne County GPS monuments with second (2nd) order vertical control.

[Return to Map](#)

THE CITY OF ORRVILLE

STATION NAME	<u>OR20</u>	TOWNSHIP	<u>GREEN</u>
TYPE OF MARK	<u>5/8" Rebar with Traverse Cap</u>	SET BY	<u>Engineering Assoc., Inc.</u>
		DATE SET	<u>1 / 6 / 05</u>
HORIZONTAL DATUM	<u>NAD83 (1986)</u>	HORIZONTAL ORDER	<u>See Note 1.</u>
LATITUDE (N)	<u>40° 51' 13.63033"</u>	LONGITUDE (W)	<u>81° 46' 02.83716"</u>
NORTH (y) meters	<u>132,084.009</u>	EAST (x) meters	<u>661,764.770</u>
NORTH (y) US feet	<u>433,345.62</u>	EAST (x) US feet	<u>2,171,139.92</u>
CONVERGENCE	<u>0° 28' 52.50"</u>	COMBINED FACTOR	<u>0.99990225</u>
STATE PLANE COORDINATE SYSTEM ZONE		OHIO NORTH (3401)	
VERTICAL DATUM	<u>NAVD88</u>	VERTICAL ORDER	<u>See Note 2.</u>
ELEVATION (z) meters	<u>311.939</u>	ELEVATION (z) US feet	<u>1023.42</u>

STATION REFERENCES



Looking North

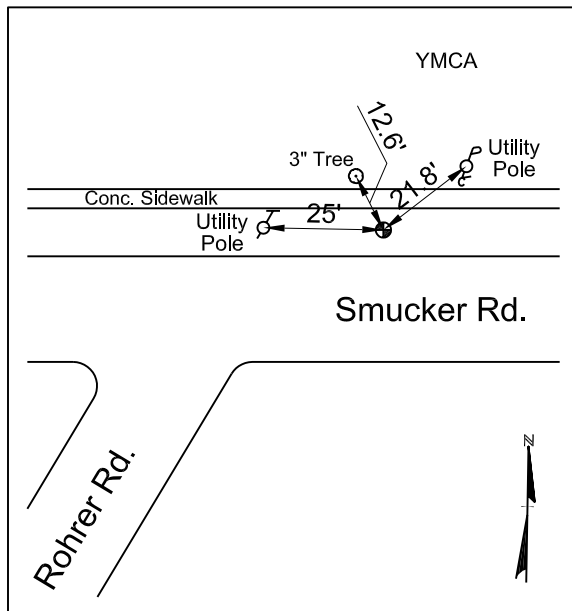
NOTES:

1. Horizontal coordinates are based on GPS observations that utilized Wayne County GPS monuments with first (1st) order horizontal control.
2. Vertical coordinates are based on GPS observations that utilized Wayne County GPS monuments with second (2nd) order vertical control.

THE CITY OF ORRVILLE

STATION NAME	<u>OR21</u>	TOWNSHIP	<u>GREEN</u>
TYPE OF MARK	<u>5/8" Rebar with Traverse Cap</u>	SET BY	<u>Engineering Assoc., Inc.</u>
		DATE SET	<u>1 / 6 / 05</u>
HORIZONTAL DATUM	<u>NAD83 (1986)</u>	HORIZONTAL ORDER	<u>See Note 1.</u>
LATITUDE (N)	<u>40° 51' 33.18324"</u>	LONGITUDE (W)	<u>81° 47' 17.55774"</u>
NORTH (y) meters	<u>132,672.625</u>	EAST (x) meters	<u>660,009.863</u>
NORTH (y) US feet	<u>435,276.77</u>	EAST (x) US feet	<u>2,165,382.36</u>
CONVERGENCE	<u>0° 25' 03.42"</u>	COMBINED FACTOR	<u>0.99989796</u>
STATE PLANE COORDINATE SYSTEM ZONE		OHIO NORTH (3401)	
VERTICAL DATUM	<u>NAVD88</u>	VERTICAL ORDER	<u>See Note 2.</u>
ELEVATION (z) meters	<u>339.341</u>	ELEVATION (z) US feet	<u>1113.32</u>

STATION REFERENCES



Looking Northeast

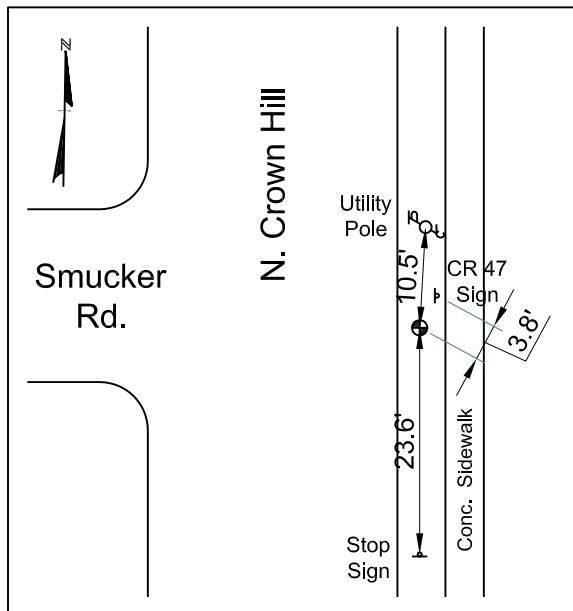
NOTES:

1. Horizontal coordinates are based on GPS observations that utilized Wayne County GPS monuments with first (1st) order horizontal control.
2. Vertical coordinates are based on GPS observations that utilized Wayne County GPS monuments with second (2nd) order vertical control.

THE CITY OF ORRVILLE

STATION NAME	<u>OR22</u>	TOWNSHIP	<u>GREEN</u>
TYPE OF MARK	<u>5/8" Rebar with Traverse Cap</u>	SET BY	<u>Engineering Assoc., Inc.</u>
		DATE SET	<u>1 / 6 / 05</u>
HORIZONTAL DATUM	<u>NAD83 (1986)</u>	HORIZONTAL ORDER	<u>See Note 1.</u>
LATITUDE (N)	<u>40° 51' 33.08601"</u>	LONGITUDE (W)	<u>81° 47' 02.65443"</u>
NORTH (y) meters	<u>132,672.482</u>	EAST (x) meters	<u>660,358.900</u>
NORTH (y) US feet	<u>435,276.30</u>	EAST (x) US feet	<u>2,166,527.49</u>
CONVERGENCE	<u>0° 28' 13.20"</u>	COMBINED FACTOR	<u>0.99989912</u>
STATE PLANE COORDINATE SYSTEM ZONE		OHIO NORTH (3401)	
VERTICAL DATUM	<u>NAVD88</u>	VERTICAL ORDER	<u>See Note 2.</u>
ELEVATION (z) meters	<u>331.919</u>	ELEVATION (z) US feet	<u>1088.97</u>

STATION REFERENCES



Looking North

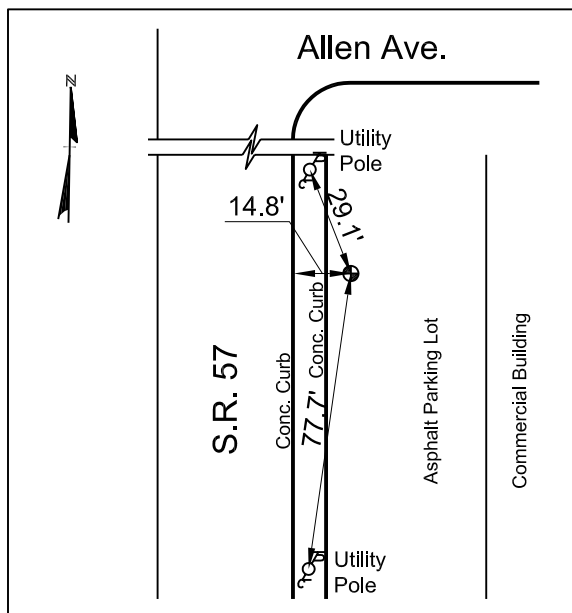
NOTES:

- Horizontal coordinates are based on GPS observations that utilized Wayne County GPS monuments with first (1st) order horizontal control.
- Vertical coordinates are based on GPS observations that utilized Wayne County GPS monuments with second (2nd) order vertical control.

THE CITY OF ORRVILLE

STATION NAME	<u>OR23</u>	TOWNSHIP	<u>BAUGHMAN</u>
TYPE OF MARK	<u>Railroad Spike</u>	SET BY	<u>Engineering Assoc., Inc.</u>
		DATE SET	<u>1 / 6 / 05</u>
HORIZONTAL DATUM	<u>NAD83 (1986)</u>	HORIZONTAL ORDER	<u>See Note 1.</u>
LATITUDE (N)	<u>40° 51' 19.00423"</u>	LONGITUDE (W)	<u>81° 45' 49.20604</u>
NORTH (y) meters	<u>132,252.454</u>	EAST (x) meters	<u>662,082.616</u>
NORTH (y) US feet	<u>433,898.26</u>	EAST (x) US feet	<u>2,172,182.72</u>
CONVERGENCE	<u>0° 29' 01.44"</u>	COMBINED FACTOR	<u>0.99990283</u>
STATE PLANE COORDINATE SYSTEM ZONE		OHIO NORTH (3401)	
VERTICAL DATUM	<u>NAVD88</u>	VERTICAL ORDER	<u>See Note 2.</u>
ELEVATION (z) meters	<u>308.254</u>	ELEVATION (z) US feet	<u>1011.33</u>

STATION REFERENCES



Looking North

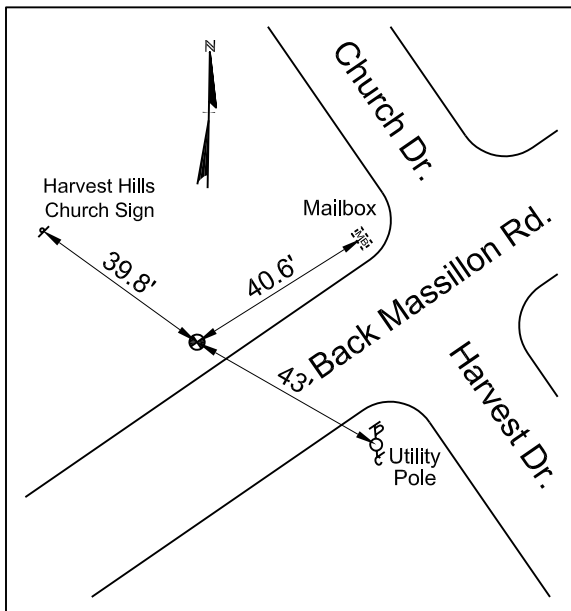
NOTES:

1. Horizontal coordinates are based on GPS observations that utilized Wayne County GPS monuments with first (1st) order horizontal control.
2. Vertical coordinates are based on GPS observations that utilized Wayne County GPS monuments with second (2nd) order vertical control.

THE CITY OF ORRVILLE

STATION NAME	<u>OR24</u>	TOWNSHIP	<u>GREEN</u>
TYPE OF MARK	<u>5/8" Rebar with Traverse Cap</u>	SET BY	<u>Engineering Assoc., Inc.</u>
		DATE SET	<u>1 / 6 / 05</u>
HORIZONTAL DATUM	<u>NAD83 (1986)</u>	HORIZONTAL ORDER	<u>See Note 1.</u>
LATITUDE (N)	<u>40° 51' 49.21405"</u>	LONGITUDE (W)	<u>81° 46' 47.40389"</u>
NORTH (y) meters	<u>133,172.890</u>	EAST (x) meters	<u>660,711.937</u>
NORTH (y) US feet	<u>436,918.06</u>	EAST (x) US feet	<u>2,167,685.75</u>
CONVERGENCE	<u>0° 28' 23.22"</u>	COMBINED FACTOR	<u>0.999900262</u>
STATE PLANE COORDINATE SYSTEM ZONE		OHIO NORTH (3401)	
VERTICAL DATUM	<u>NAVD88</u>	VERTICAL ORDER	<u>See Note 2.</u>
ELEVATION (z) meters	<u>318.270</u>	ELEVATION (z) US feet	<u>1044.19</u>

STATION REFERENCES



Looking West

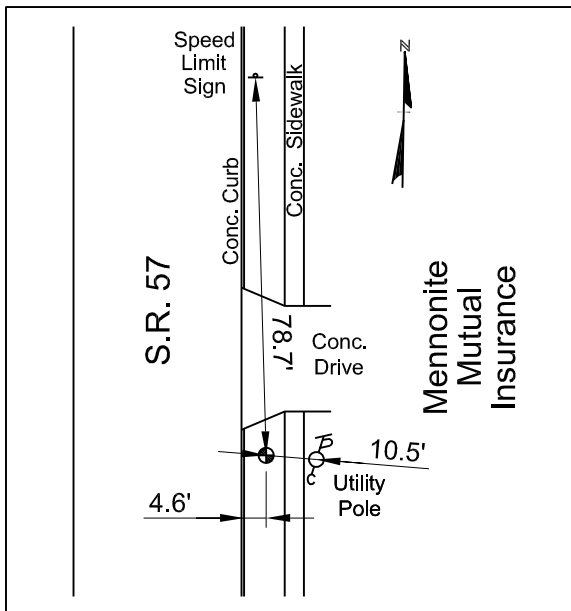
NOTES:

- Horizontal coordinates are based on GPS observations that utilized Wayne County GPS monuments with first (1st) order horizontal control.
- Vertical coordinates are based on GPS observations that utilized Wayne County GPS monuments with second (2nd) order vertical control.

THE CITY OF ORRVILLE

STATION NAME	<u>OT01</u>	TOWNSHIP	<u>BAUGHMAN</u>
TYPE OF MARK	<u>5/8" Rebar with Traverse Cap</u>	SET BY	<u>Engineering Assoc., Inc.</u>
		DATE SET	<u>9 / 30 / 08</u>
HORIZONTAL DATUM	<u>NAD83 (1986)</u>	HORIZONTAL ORDER	<u>See Note 1.</u>
LATITUDE (N)	<u>40° 49' 43.09557"</u>	LONGITUDE (W)	<u>81° 45' 52.75349"</u>
NORTH (y) meters	<u>129,293.477</u>	EAST (x) meters	<u>662,024.480</u>
NORTH (y) US feet	<u>424,190.35</u>	EAST (x) US feet	<u>2,171,991.98</u>
CONVERGENCE	<u>0° 28' 59.10"</u>	COMBINED FACTOR	<u>0.999899363</u>
STATE PLANE COORDINATE SYSTEM ZONE		OHIO NORTH (3401)	
VERTICAL DATUM	<u>NAVD88</u>	VERTICAL ORDER	<u>See Note 2.</u>
ELEVATION (z) meters	<u>341.829</u>	ELEVATION (z) US feet	<u>1121.48</u>

STATION REFERENCES



Looking North

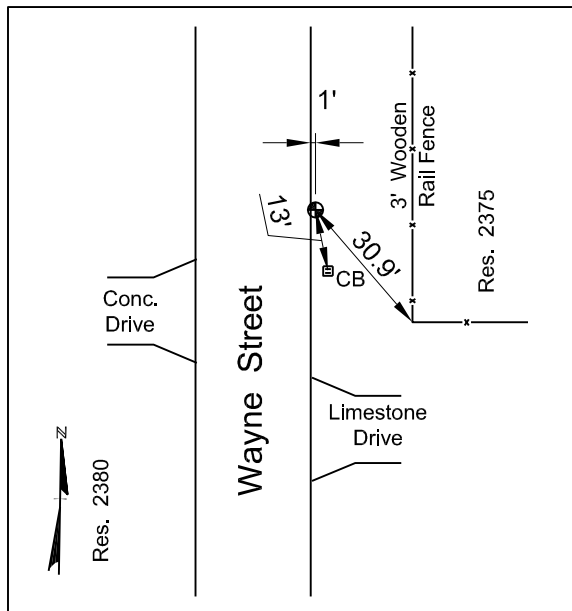
NOTES:

1. Horizontal coordinates are based on GPS observations that utilized Wayne County GPS monuments with first (1st) order horizontal control.
2. Vertical coordinates are based on GPS observations that utilized Wayne County GPS monuments with second (2nd) order vertical control.

THE CITY OF ORRVILLE

STATION NAME	<u>OT02</u>	TOWNSHIP	<u>BAUGHMAN</u>
TYPE OF MARK	<u>5/8" Rebar with Traverse Cap</u>	SET BY	<u>Engineering Assoc., Inc.</u>
		DATE SET	<u>9 / 30 / 08</u>
HORIZONTAL DATUM	<u>NAD83 (1986)</u>	HORIZONTAL ORDER	<u>See Note 1.</u>
LATITUDE (N)	<u>40° 49' 45.27222"</u>	LONGITUDE (W)	<u>81° 45' 16.35747"</u>
NORTH (y) meters	<u>129,367.855</u>	EAST (x) meters	<u>662,876.637</u>
NORTH (y) US feet	<u>424,434.37</u>	EAST (x) US feet	<u>2,174,787.76</u>
CONVERGENCE	<u>0° 29' 23.04"</u>	COMBINED FACTOR	<u>0.999899733</u>
STATE PLANE COORDINATE SYSTEM ZONE		OHIO NORTH (3401)	
VERTICAL DATUM	<u>NAVD88</u>	VERTICAL ORDER	<u>See Note 2.</u>
ELEVATION (z) meters	<u>339.171</u>	ELEVATION (z) US feet	<u>1112.76</u>

STATION REFERENCES



Looking South

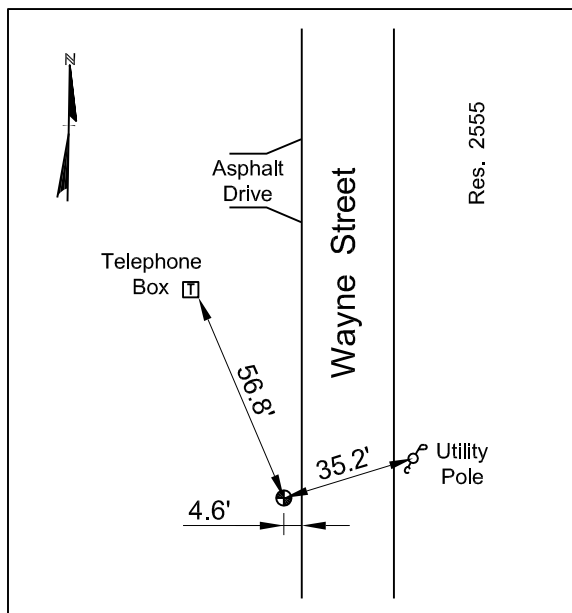
NOTES:

1. Horizontal coordinates are based on GPS observations that utilized Wayne County GPS monuments with first (1st) order horizontal control.
2. Vertical coordinates are based on GPS observations that utilized Wayne County GPS monuments with second (2nd) order vertical control.

THE CITY OF ORRVILLE

STATION NAME	<u>OT03</u>	TOWNSHIP	<u>BAUGHMAN</u>
TYPE OF MARK	<u>5/8" Rebar with Traverse Cap</u>	SET BY	<u>Engineering Assoc., Inc.</u>
		DATE SET	<u>9 / 30 / 08</u>
HORIZONTAL DATUM	<u>NAD83 (1986)</u>	HORIZONTAL ORDER	<u>See Note 1.</u>
LATITUDE (N)	<u>40° 49' 51.41406"</u>	LONGITUDE (W)	<u>81° 45' 16.48895"</u>
NORTH (y) meters	<u>132,055.596</u>	EAST (x) meters	<u>662,871.937</u>
NORTH (y) US feet	<u>425,055.81</u>	EAST (x) US feet	<u>2,174,772.34</u>
CONVERGENCE	<u>0° 29' 22.92"</u>	COMBINED FACTOR	<u>0.999899113</u>
STATE PLANE COORDINATE SYSTEM ZONE		OHIO NORTH (3401)	
VERTICAL DATUM	<u>NAVD88</u>	VERTICAL ORDER	<u>See Note 2.</u>
ELEVATION (z) meters	<u>342.348</u>	ELEVATION (z) US feet	<u>1123.19</u>

STATION REFERENCES



Looking North

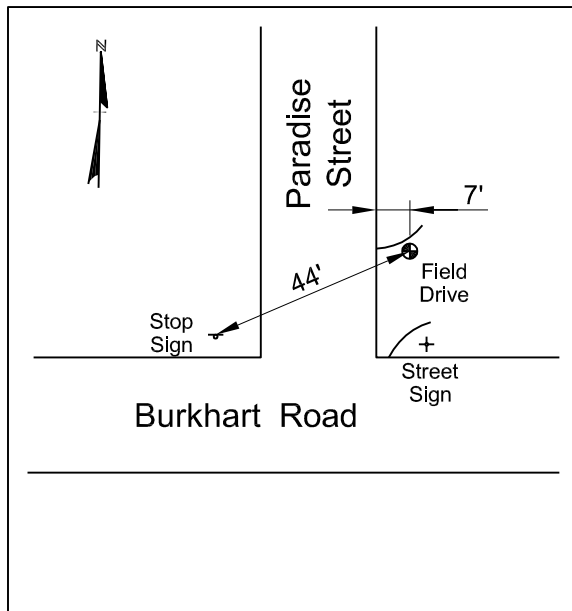
NOTES:

1. Horizontal coordinates are based on GPS observations that utilized Wayne County GPS monuments with first (1st) order horizontal control.
2. Vertical coordinates are based on GPS observations that utilized Wayne County GPS monuments with second (2nd) order vertical control.

THE CITY OF ORRVILLE

STATION NAME	<u>OT04</u>	TOWNSHIP	<u>BAUGHMAN</u>
TYPE OF MARK	<u>5/8" Rebar with Traverse Cap</u>	SET BY	<u>Engineering Assoc., Inc.</u>
		DATE SET	<u>9 / 30 / 08</u>
HORIZONTAL DATUM	<u>NAD83 (1986)</u>	HORIZONTAL ORDER	<u>See Note 1.</u>
LATITUDE (N)	<u>40° 49' 54.74388"</u>	LONGITUDE (W)	<u>81° 44' 58.54629"</u>
NORTH (y) meters	<u>132,267.997</u>	EAST (x) meters	<u>663,291.421</u>
NORTH (y) US feet	<u>425,404.61</u>	EAST (x) US feet	<u>2,176,148.60</u>
CONVERGENCE	<u>0° 29' 34.74"</u>	COMBINED FACTOR	<u>0.999902332</u>
STATE PLANE COORDINATE SYSTEM ZONE		OHIO NORTH (3401)	
VERTICAL DATUM	<u>NAVD88</u>	VERTICAL ORDER	<u>See Note 2.</u>
ELEVATION (z) meters	<u>321.446</u>	ELEVATION (z) US feet	<u>1054.61</u>

STATION REFERENCES



Looking South

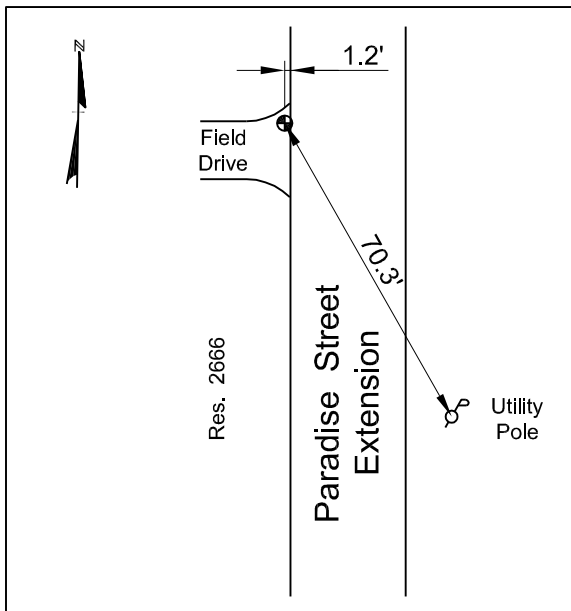
NOTES:

1. Horizontal coordinates are based on GPS observations that utilized Wayne County GPS monuments with first (1st) order horizontal control.
2. Vertical coordinates are based on GPS observations that utilized Wayne County GPS monuments with second (2nd) order vertical control.

THE CITY OF ORRVILLE

STATION NAME	<u>OT05</u>	TOWNSHIP	<u>BAUGHMAN</u>
TYPE OF MARK	<u>5/8" Rebar with Traverse Cap</u>	SET BY	<u>Engineering Assoc., Inc.</u>
		DATE SET	<u>9 / 30 / 08</u>
HORIZONTAL DATUM	<u>NAD83 (1986)</u>	HORIZONTAL ORDER	<u>See Note 1.</u>
LATITUDE (N)	<u>40° 50' 00.75945"</u>	LONGITUDE (W)	<u>81° 44' 58.83944"</u>
NORTH (y) meters	<u>129,849.072</u>	EAST (x) meters	<u>663,282.957</u>
NORTH (y) US feet	<u>426,013.16</u>	EAST (x) US feet	<u>2,176,120.83</u>
CONVERGENCE	<u>0° 29' 34.50"</u>	COMBINED FACTOR	<u>0.999902142</u>
STATE PLANE COORDINATE SYSTEM ZONE		OHIO NORTH (3401)	
VERTICAL DATUM	<u>NAVD88</u>	VERTICAL ORDER	<u>See Note 2.</u>
ELEVATION (z) meters	<u>321.870</u>	ELEVATION (z) US feet	<u>1056.00</u>

STATION REFERENCES



Looking South

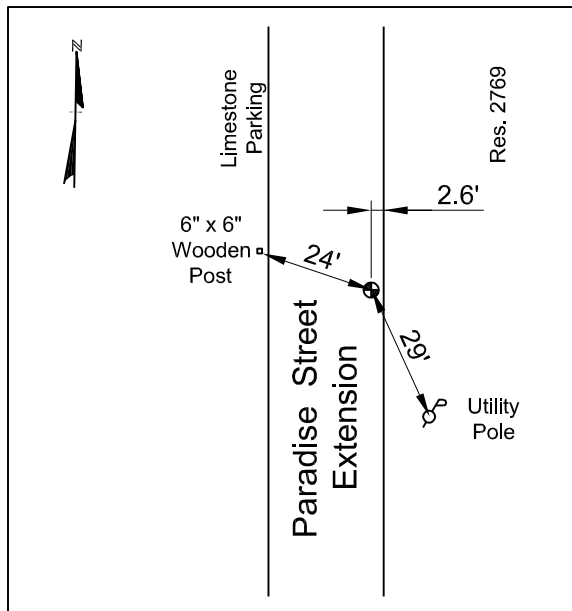
NOTES:

1. Horizontal coordinates are based on GPS observations that utilized Wayne County GPS monuments with first (1st) order horizontal control.
2. Vertical coordinates are based on GPS observations that utilized Wayne County GPS monuments with second (2nd) order vertical control.

THE CITY OF ORRVILLE

STATION NAME	<u>OT06</u>	TOWNSHIP	<u>BAUGHMAN</u>
TYPE OF MARK	<u>Mine Spike</u>	SET BY	<u>Engineering Assoc., Inc.</u>
		DATE SET	<u>9 / 30 / 08</u>
HORIZONTAL DATUM	<u>NAD83 (1986)</u>	HORIZONTAL ORDER	<u>See Note 1.</u>
LATITUDE (N)	<u>40° 50' 06.12271"</u>	LONGITUDE (W)	<u>81° 44' 58.71965"</u>
NORTH (y) meters	<u>130,014.524</u>	EAST (x) meters	<u>663,284.340</u>
NORTH (y) US feet	<u>426,555.99</u>	EAST (x) US feet	<u>2,176,125.37</u>
CONVERGENCE	<u>0° 29' 34.62"</u>	COMBINED FACTOR	<u>0.999901742</u>
STATE PLANE COORDINATE SYSTEM ZONE		OHIO NORTH (3401)	
VERTICAL DATUM	<u>NAVD88</u>	VERTICAL ORDER	<u>See Note 2.</u>
ELEVATION (z) meters	<u>323.689</u>	ELEVATION (z) US feet	<u>1061.97</u>

STATION REFERENCES



Looking North

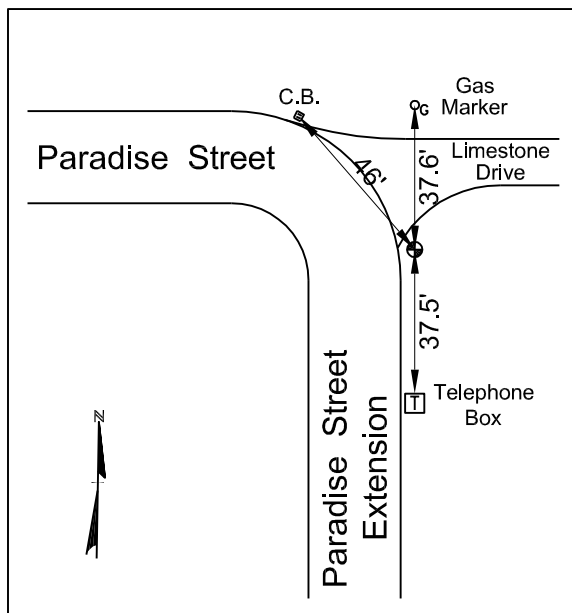
NOTES:

1. Horizontal coordinates are based on GPS observations that utilized Wayne County GPS monuments with first (1st) order horizontal control.
2. Vertical coordinates are based on GPS observations that utilized Wayne County GPS monuments with second (2nd) order vertical control.

THE CITY OF ORRVILLE

STATION NAME	<u>OT07</u>	TOWNSHIP	<u>BAUGHMAN</u>
TYPE OF MARK	<u>5/8" Rebar with Traverse Cap</u>	SET BY	<u>Engineering Assoc., Inc.</u>
		DATE SET	<u>9 / 30 / 08</u>
HORIZONTAL DATUM	<u>NAD83 (1986)</u>	HORIZONTAL ORDER	<u>See Note 1.</u>
LATITUDE (N)	<u>40° 50' 11.74623"</u>	LONGITUDE (W)	<u>81° 44' 58.89531"</u>
NORTH (y) meters	<u>130,187.945</u>	EAST (x) meters	<u>663,278.733</u>
NORTH (y) US feet	<u>427,124.95</u>	EAST (x) US feet	<u>2,176,106.97</u>
CONVERGENCE	<u>0° 29' 34.50"</u>	COMBINED FACTOR	<u>0.999901692</u>
STATE PLANE COORDINATE SYSTEM ZONE		OHIO NORTH (3401)	
VERTICAL DATUM	<u>NAVD88</u>	VERTICAL ORDER	<u>See Note 2.</u>
ELEVATION (z) meters	<u>323.325</u>	ELEVATION (z) US feet	<u>1060.78</u>

STATION REFERENCES



Looking East

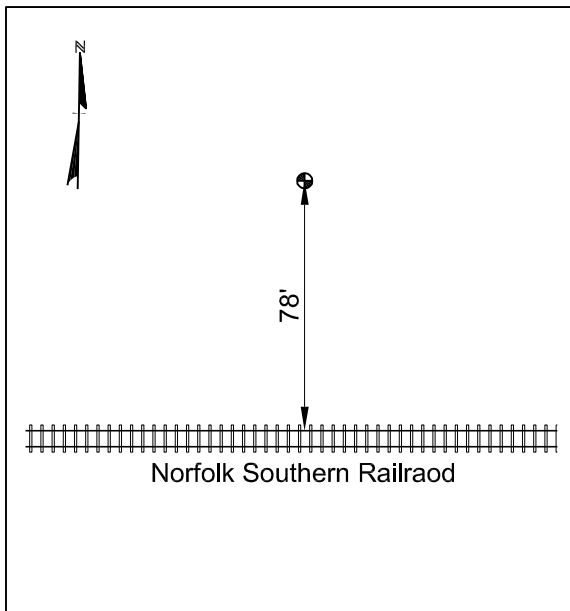
NOTES:

1. Horizontal coordinates are based on GPS observations that utilized Wayne County GPS monuments with first (1st) order horizontal control.
2. Vertical coordinates are based on GPS observations that utilized Wayne County GPS monuments with second (2nd) order vertical control.

THE CITY OF ORRVILLE

STATION NAME	<u>OT08</u>	TOWNSHIP	<u>BAUGHMAN</u>
TYPE OF MARK	<u>5/8" Rebar with Traverse Cap</u>	SET BY	<u>Engineering Assoc., Inc.</u>
		DATE SET	<u>10 / 2 / 08</u>
HORIZONTAL DATUM	<u>NAD83 (1986)</u>	HORIZONTAL ORDER	<u>See Note 1.</u>
LATITUDE (N)	<u>40° 50' 24.67297"</u>	LONGITUDE (W)	<u>81° 45' 01.85840"</u>
NORTH (y) meters	<u>130,586.069</u>	EAST (x) meters	<u>663,205.892</u>
NORTH (y) US feet	<u>428,431.13</u>	EAST (x) US feet	<u>2,175,867.99</u>
CONVERGENCE	<u>0° 29' 32.52"</u>	COMBINED FACTOR	<u>0.999903262</u>
STATE PLANE COORDINATE SYSTEM ZONE		OHIO NORTH (3401)	
VERTICAL DATUM	<u>NAVD88</u>	VERTICAL ORDER	<u>See Note 2.</u>
ELEVATION (z) meters	<u>311.735</u>	ELEVATION (z) US feet	<u>1022.75</u>

STATION REFERENCES



Looking North

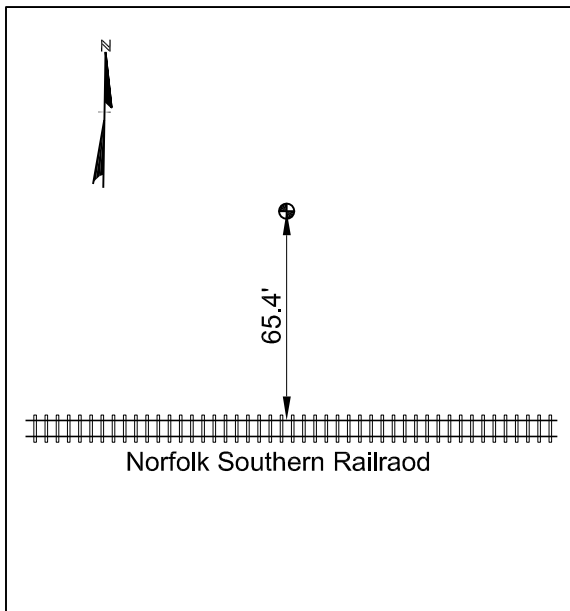
NOTES:

- Horizontal coordinates are based on GPS observations that utilized Wayne County GPS monuments with first (1st) order horizontal control.
- Vertical coordinates are based on GPS observations that utilized Wayne County GPS monuments with second (2nd) order vertical control.

THE CITY OF ORRVILLE

STATION NAME	<u>OT09</u>	TOWNSHIP	<u>BAUGHMAN</u>
TYPE OF MARK	<u>5/8" Rebar with Traverse Cap</u>	SET BY	<u>Engineering Assoc., Inc.</u>
		DATE SET	<u>10 / 2 / 08</u>
HORIZONTAL DATUM	<u>NAD83 (1986)</u>	HORIZONTAL ORDER	<u>See Note 1.</u>
LATITUDE (N)	<u>40° 50' 24.76703"</u>	LONGITUDE (W)	<u>81° 45' 08.52129"</u>
NORTH (y) meters	<u>130,587.630</u>	EAST (x) meters	<u>663,049.788</u>
NORTH (y) US feet	<u>428,436.25</u>	EAST (x) US feet	<u>2,175,355.84</u>
CONVERGENCE	<u>0° 29' 28.14"</u>	COMBINED FACTOR	<u>0.999902952</u>
STATE PLANE COORDINATE SYSTEM ZONE		OHIO NORTH (3401)	
VERTICAL DATUM	<u>NAVD88</u>	VERTICAL ORDER	<u>See Note 2.</u>
ELEVATION (z) meters	<u>313.732</u>	ELEVATION (z) US feet	<u>1029.30</u>

STATION REFERENCES



Looking North

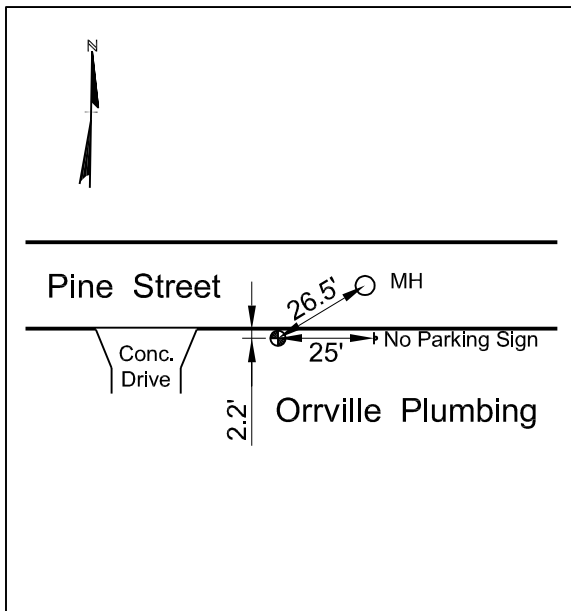
NOTES:

- Horizontal coordinates are based on GPS observations that utilized Wayne County GPS monuments with first (1st) order horizontal control.
- Vertical coordinates are based on GPS observations that utilized Wayne County GPS monuments with second (2nd) order vertical control.

THE CITY OF ORRVILLE

STATION NAME	<u>OT10</u>	TOWNSHIP	<u>BAUGHMAN</u>
TYPE OF MARK	<u>5/8" Rebar with Traverse Cap</u>	SET BY	<u>Engineering Assoc., Inc.</u>
		DATE SET	<u>10 / 2 / 08</u>
HORIZONTAL DATUM	<u>NAD83 (1986)</u>	HORIZONTAL ORDER	<u>See Note 1.</u>
LATITUDE (N)	<u>40° 50' 21.68260"</u>	LONGITUDE (W)	<u>81° 45' 33.23643"</u>
NORTH (y) meters	<u>130,487.552</u>	EAST (x) meters	<u>662,471.640</u>
NORTH (y) US feet	<u>428,107.91</u>	EAST (x) US feet	<u>2,173,459.04</u>
CONVERGENCE	<u>0° 29' 11.94"</u>	COMBINED FACTOR	<u>0.999901962</u>
STATE PLANE COORDINATE SYSTEM ZONE		OHIO NORTH (3401)	
VERTICAL DATUM	<u>NAVD88</u>	VERTICAL ORDER	<u>See Note 2.</u>
ELEVATION (z) meters	<u>320.419</u>	ELEVATION (z) US feet	<u>1051.24</u>

STATION REFERENCES



Looking East

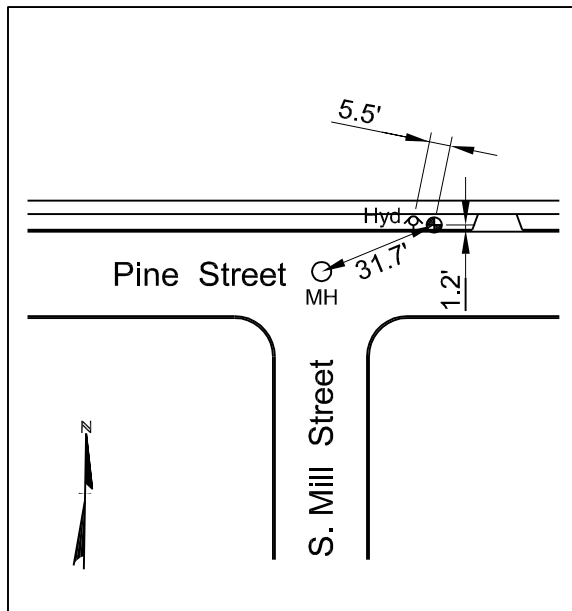
NOTES:

1. Horizontal coordinates are based on GPS observations that utilized Wayne County GPS monuments with first (1st) order horizontal control.
2. Vertical coordinates are based on GPS observations that utilized Wayne County GPS monuments with second (2nd) order vertical control.

THE CITY OF ORRVILLE

STATION NAME	<u>OT11</u>	TOWNSHIP	<u>BAUGHMAN</u>
TYPE OF MARK	<u>5/8" Rebar with Traverse Cap</u>	SET BY	<u>Engineering Assoc., Inc.</u>
		DATE SET	<u>10 / 2 / 08</u>
HORIZONTAL DATUM	<u>NAD83 (1986)</u>	HORIZONTAL ORDER	<u>See Note 1.</u>
LATITUDE (N)	<u>40° 50' 22.09314"</u>	LONGITUDE (W)	<u>81° 45' 42.83818"</u>
NORTH (y) meters	<u>130,498.308</u>	EAST (x) meters	<u>662,246.608</u>
NORTH (y) US feet	<u>428,143.20</u>	EAST (x) US feet	<u>2,172,720.74</u>
CONVERGENCE	<u>0° 29' 05.64"</u>	COMBINED FACTOR	<u>0.999901942</u>
STATE PLANE COORDINATE SYSTEM ZONE		OHIO NORTH (3401)	
VERTICAL DATUM	<u>NAVD88</u>	VERTICAL ORDER	<u>See Note 2.</u>
ELEVATION (z) meters	<u>320.441</u>	ELEVATION (z) US feet	<u>1051.31</u>

STATION REFERENCES



Looking West

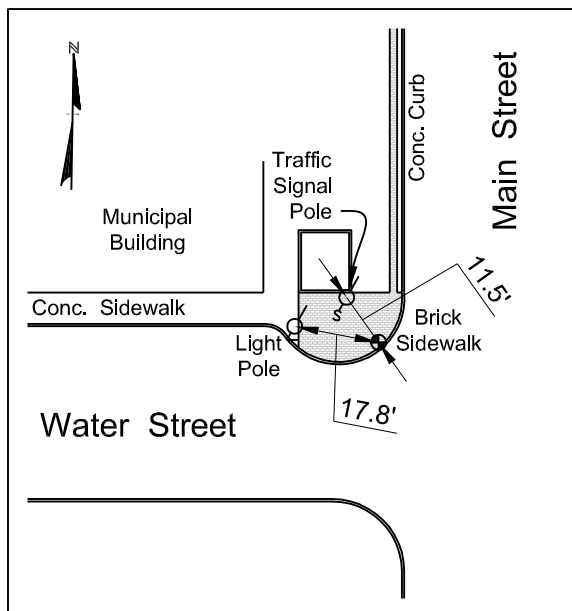
NOTES:

1. Horizontal coordinates are based on GPS observations that utilized Wayne County GPS monuments with first (1st) order horizontal control.
2. Vertical coordinates are based on GPS observations that utilized Wayne County GPS monuments with second (2nd) order vertical control.

THE CITY OF ORRVILLE

STATION NAME	<u>OT12</u>	TOWNSHIP	<u>GREEN</u>
TYPE OF MARK	<u>Mine Spike</u>	SET BY	<u>Engineering Assoc., Inc.</u>
		DATE SET	<u>10 / 3 / 08</u>
HORIZONTAL DATUM	<u>NAD83 (1986)</u>	HORIZONTAL ORDER	<u>See Note 1.</u>
LATITUDE (N)	<u>40° 50' 29.55637"</u>	LONGITUDE (W)	<u>81° 45' 51.64720"</u>
NORTH (y) meters	<u>130,726.765</u>	EAST (x) meters	<u>662,038.311</u>
NORTH (y) US feet	<u>428,892.73</u>	EAST (x) US feet	<u>2,172,037.36</u>
CONVERGENCE	<u>0° 28' 59.82"</u>	COMBINED FACTOR	<u>0.999901312</u>
STATE PLANE COORDINATE SYSTEM ZONE		OHIO NORTH (3401)	
VERTICAL DATUM	<u>NAVD88</u>	VERTICAL ORDER	<u>See Note 2.</u>
ELEVATION (z) meters	<u>323.624</u>	ELEVATION (z) US feet	<u>1061.76</u>

STATION REFERENCES



Looking Northwest

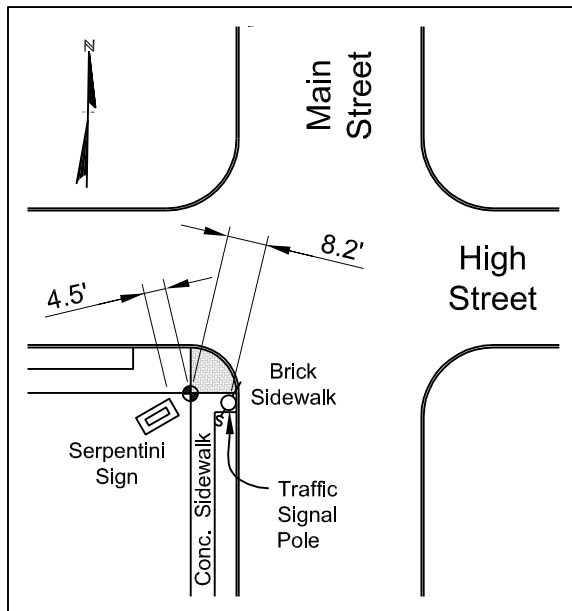
NOTES:

1. Horizontal coordinates are based on GPS observations that utilized Wayne County GPS monuments with first (1st) order horizontal control.
2. Vertical coordinates are based on GPS observations that utilized Wayne County GPS monuments with second (2nd) order vertical control.

THE CITY OF ORRVILLE

STATION NAME	<u>OT13</u>	TOWNSHIP	<u>GREEN</u>
TYPE OF MARK	<u>Mine Spike</u>	SET BY	<u>Engineering Assoc., Inc.</u>
		DATE SET	<u>10 / 3 / 08</u>
HORIZONTAL DATUM	<u>NAD83 (1986)</u>	HORIZONTAL ORDER	<u>See Note 1.</u>
LATITUDE (N)	<u>40° 50' 36.30831"</u>	LONGITUDE (W)	<u>81° 45' 51.43637"</u>
NORTH (y) meters	<u>130,935.069</u>	EAST (x) meters	<u>662,041.493</u>
NORTH (y) US feet	<u>429,576.14</u>	EAST (x) US feet	<u>2,172,047.79</u>
CONVERGENCE	<u>0° 29' 00.00"</u>	COMBINED FACTOR	<u>0.999901132</u>
STATE PLANE COORDINATE SYSTEM ZONE		OHIO NORTH (3401)	
VERTICAL DATUM	<u>NAVD88</u>	VERTICAL ORDER	<u>See Note 2.</u>
ELEVATION (z) meters	<u>323.890</u>	ELEVATION (z) US feet	<u>1062.63</u>

STATION REFERENCES



Looking South

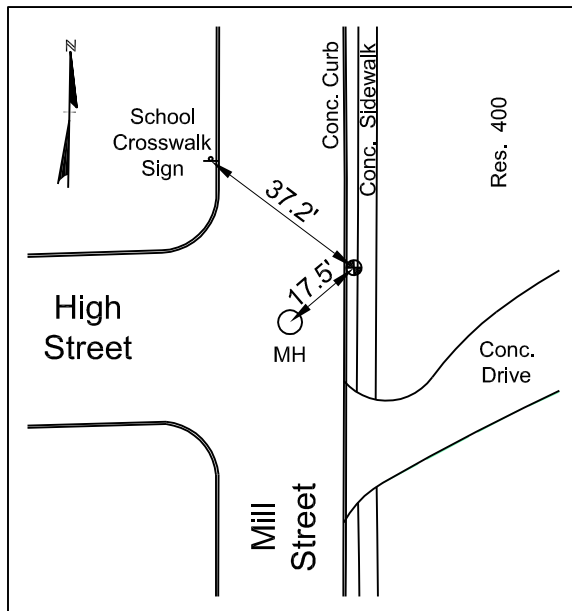
NOTES:

- Horizontal coordinates are based on GPS observations that utilized Wayne County GPS monuments with first (1st) order horizontal control.
- Vertical coordinates are based on GPS observations that utilized Wayne County GPS monuments with second (2nd) order vertical control.

THE CITY OF ORRVILLE

STATION NAME	<u>OT14</u>	TOWNSHIP	<u>BAUGHMAN</u>
TYPE OF MARK	<u>5/8" Rebar with Traverse Cap</u>	SET BY	<u>Engineering Assoc., Inc.</u>
		DATE SET	<u>10 / 3 / 08</u>
HORIZONTAL DATUM	<u>NAD83 (1986)</u>	HORIZONTAL ORDER	<u>See Note 1.</u>
LATITUDE (N)	<u>40° 50' 36.73978"</u>	LONGITUDE (W)	<u>81° 45' 42.34303"</u>
NORTH (y) meters	<u>130,950.177</u>	EAST (x) meters	<u>662,254.383</u>
NORTH (y) US feet	<u>429,625.71</u>	EAST (x) US feet	<u>2,172,746.25</u>
CONVERGENCE	<u>0° 29' 05.94"</u>	COMBINED FACTOR	<u>0.999901662</u>
STATE PLANE COORDINATE SYSTEM ZONE		OHIO NORTH (3401)	
VERTICAL DATUM	<u>NAVD88</u>	VERTICAL ORDER	<u>See Note 2.</u>
ELEVATION (z) meters	<u>320.523</u>	ELEVATION (z) US feet	<u>1051.58</u>

STATION REFERENCES



Looking East

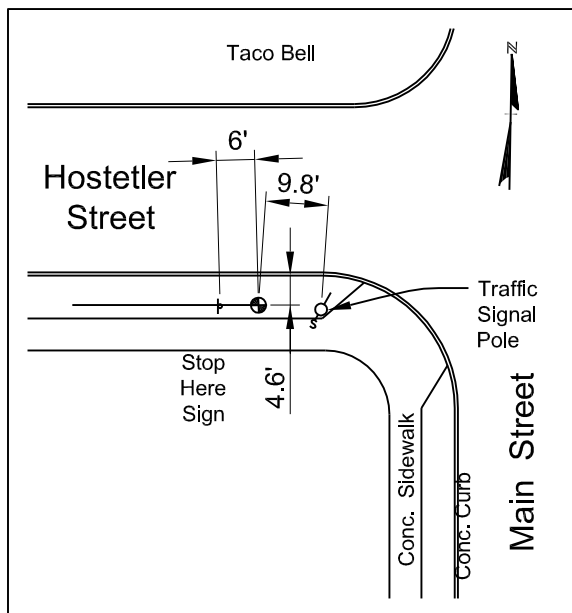
NOTES:

1. Horizontal coordinates are based on GPS observations that utilized Wayne County GPS monuments with first (1st) order horizontal control.
2. Vertical coordinates are based on GPS observations that utilized Wayne County GPS monuments with second (2nd) order vertical control.

THE CITY OF ORRVILLE

STATION NAME	<u>OT15</u>	TOWNSHIP	<u>BAUGHMAN</u>
TYPE OF MARK	<u>5/8" Rebar with Traverse Cap</u>	SET BY	<u>Engineering Assoc., Inc.</u>
		DATE SET	<u>10 / 3 / 08</u>
HORIZONTAL DATUM	<u>NAD83 (1986)</u>	HORIZONTAL ORDER	<u>See Note 1.</u>
LATITUDE (N)	<u>40° 51' 12.63035"</u>	LONGITUDE (W)	<u>81° 45' 50.50682"</u>
NORTH (y) meters	<u>132,055.596</u>	EAST (x) meters	<u>662,053.812</u>
NORTH (y) US feet	<u>433,252.40</u>	EAST (x) US feet	<u>2,172,088.21</u>
CONVERGENCE	<u>0° 29' 00.60"</u>	COMBINED FACTOR	<u>0.999902532</u>
STATE PLANE COORDINATE SYSTEM ZONE		OHIO NORTH (3401)	
VERTICAL DATUM	<u>NAVD88</u>	VERTICAL ORDER	<u>See Note 2.</u>
ELEVATION (z) meters	<u>310.744</u>	ELEVATION (z) US feet	<u>1019.50</u>

STATION REFERENCES



Looking Southeast

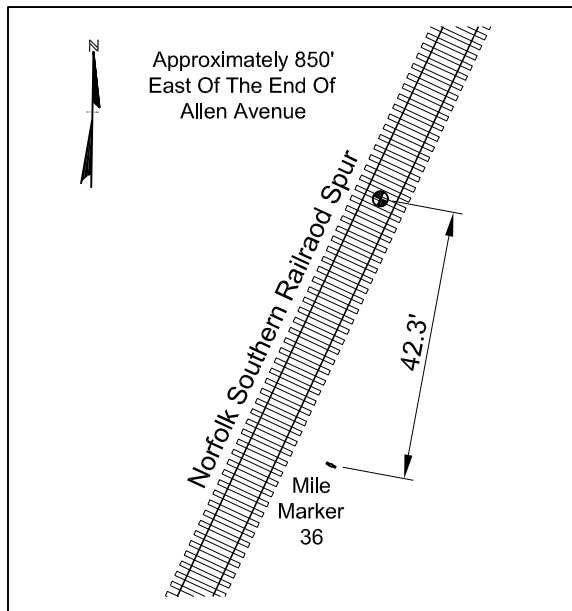
NOTES:

- Horizontal coordinates are based on GPS observations that utilized Wayne County GPS monuments with first (1st) order horizontal control.
- Vertical coordinates are based on GPS observations that utilized Wayne County GPS monuments with second (2nd) order vertical control.

THE CITY OF ORRVILLE

STATION NAME	<u>OT16</u>	TOWNSHIP	<u>BAUGHMAN</u>
TYPE OF MARK	<u>Railroad Spike</u>	SET BY	<u>Engineering Assoc., Inc.</u>
		DATE SET	<u>10 / 7 / 08</u>
HORIZONTAL DATUM	<u>NAD83 (1986)</u>	HORIZONTAL ORDER	<u>See Note 1.</u>
LATITUDE (N)	<u>40° 51' 19.36959"</u>	LONGITUDE (W)	<u>81° 45' 27.67979"</u>
NORTH (y) meters	<u>132,267.997</u>	EAST (x) meters	<u>662,586.662</u>
NORTH (y) US feet	<u>433,949.25</u>	EAST (x) US feet	<u>2,173,836.40</u>
CONVERGENCE	<u>0° 29' 15.60"</u>	COMBINED FACTOR	<u>0.999902632</u>
STATE PLANE COORDINATE SYSTEM ZONE		OHIO NORTH (3401)	
VERTICAL DATUM	<u>NAVD88</u>	VERTICAL ORDER	<u>See Note 2.</u>
ELEVATION (z) meters	<u>309.305</u>	ELEVATION (z) US feet	<u>1014.78</u>

STATION REFERENCES



Looking South

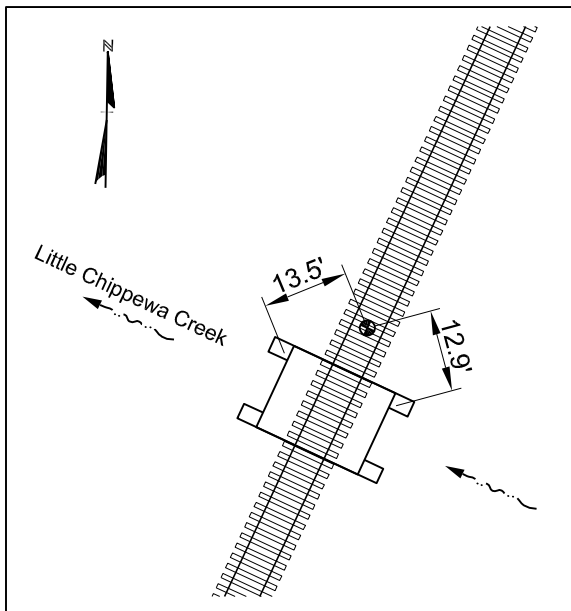
NOTES:

1. Horizontal coordinates are based on GPS observations that utilized Wayne County GPS monuments with first (1st) order horizontal control.
2. Vertical coordinates are based on GPS observations that utilized Wayne County GPS monuments with second (2nd) order vertical control.

THE CITY OF ORRVILLE

STATION NAME	<u>OT17</u>	TOWNSHIP	<u>BAUGHMAN</u>
TYPE OF MARK	<u>Railroad Spike</u>	SET BY	<u>Engineering Assoc., Inc.</u>
		DATE SET	<u>10 / 7 / 08</u>
HORIZONTAL DATUM	<u>NAD83 (1986)</u>	HORIZONTAL ORDER	<u>See Note 1.</u>
LATITUDE (N)	<u>40° 51' 23.61475"</u>	LONGITUDE (W)	<u>81° 45' 23.91059"</u>
NORTH (y) meters	<u>132,399.690</u>	EAST (x) meters	<u>662,673.820</u>
NORTH (y) US feet	<u>434,381.32</u>	EAST (x) US feet	<u>2,174,122.35</u>
CONVERGENCE	<u>0° 29' 18.06"</u>	COMBINED FACTOR	<u>0.999902542</u>
STATE PLANE COORDINATE SYSTEM ZONE		OHIO NORTH (3401)	
VERTICAL DATUM	<u>NAVD88</u>	VERTICAL ORDER	<u>See Note 2.</u>
ELEVATION (z) meters	<u>309.440</u>	ELEVATION (z) US feet	<u>1015.22</u>

STATION REFERENCES



Looking South

NOTES:

1. Horizontal coordinates are based on GPS observations that utilized Wayne County GPS monuments with first (1st) order horizontal control.
2. Vertical coordinates are based on GPS observations that utilized Wayne County GPS monuments with second (2nd) order vertical control.